



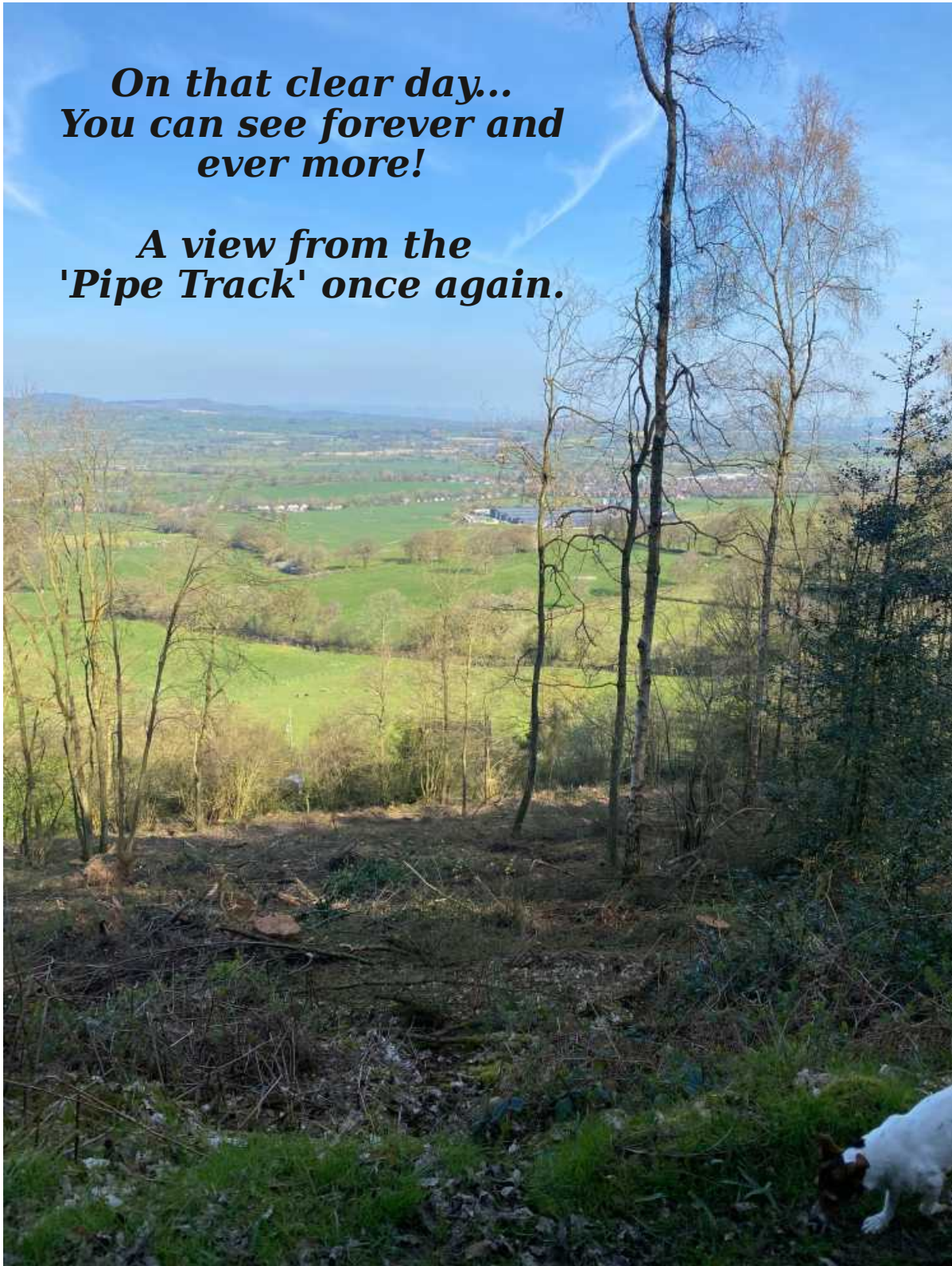
SNAILBEACH DISTRICT NEWS

May 2021
The future is clearer

Free

***On that clear day..
You can see forever and
ever more!***

***A view from the
'Pipe Track' once again.***



Thanks to Andy Batchelor

Inside this month

P3 Surgeries merger
P5 Springtime poem
P7 Natural England
P9 Family trees
P11 Events
P13 News from Westminster
P15 Health and fitness
P21 Village Hall Verges
P22 Tale of two Kitties
P27 Puzzles
P29 Heather and the Council
P31 Younger readers
P33 Mercia Police

Lots of news and information this month, so not a lot of room for some of the usual bits and bobs. Another poem from the Antipodes, some more insights into the Sayce's from the Green, and the Kitties make it to Qatar. More businesses opening their doors, some days out on offer, and it is not too long until Christmas!

It looks like masks are with us for some time, although many are appreciating the removal of the mask of trees from the 'Pipe Track'

Our trivia bits and pieces take a look at some of the famous and infamous masks in history and film.

The editor
sammy@snailbeachdistrictnews.co.uk



THANK YOU AND A PAT ON THE BACK

Doug and Margaret Boulter have written to thank everyone in the village for all the help they have received. "Since Doug's accident everybody has been outstanding".

George and Joan wish to thank everyone who sent cards, donations or messages to celebrate our diamond wedding anniversary. The family enjoyed an afternoon tea and thankfully the sun shone for us, also we thank St.Lukes for the lovely surprise gift of a patio rose. Thank you all.

George and Joan.

Despite the non running of the Dawdle or Dash we managed to raise **£1250** for the Severn Hospice, thanks must go to John at the shop for his persuasions and a very generous donation of his own.

Fund raiser Jessica Druce has written to thank us and to confirm that through the Boxing Day event our village has supported the Hospice to the tune of **£12,225** since we began in 1977.

Thanks from the committee to Doug and Mary, Bronwen Evans, and The Stiperstones Inn for kind donations to the newsletter.

Important news from Worthen and Pontesbury Surgeries

Pontesbury Medical Practice and Worthen Medical Practice formally merged to form the new Pontesbury and Worthen Medical Practice on 1st April 2021. There has been a huge amount of ‘behind the scenes’ work by our management teams and GPs to make this merger a success, and that work is ongoing. Our aim being to build on the successes in delivering high quality primary care services achieved by both practices, and ensure that we continue have a resilient and future-proof local service for our patients.

For technical and logistical reasons, a full integration of our IT systems can only occur after a short time has elapsed. So for the early weeks in April, patients will notice little difference other than seeing some new faces at both sites.

Once we have our IT and communications fully integrated at the end of this month, the benefits of the merger will become more obvious to our patients. With an integrated booking system, patients will have a broader choice of clinicians, and the option of appointments with clinicians at either site where necessary.

Our dispensary integration will improve efficiency and responsiveness, with all of the repeat medications being prepared at our large dispensary on the Pontesbury site. Patients who have previously collected their medication from Worthen will continue to do so should they choose to. Urgently required prescriptions issued in surgery at Worthen will continue to be dispensed at the time from Worthen.

Both surgeries have experienced unprecedented levels of demand for appointments over the last 12 months, and this continues to make keeping up with demand extremely challenging. The COVID 19 pandemic has led to a large number of hospital appointments being cancelled and those patients affected are requiring significant additional Primary Care support. We have been extremely grateful not only for the support and understanding of our patients throughout the COVID 19 pandemic, but also for the widespread enthusiasm and constructive contributions to our merger.



The Flower Shop

3 Station Road, Minsterley

Tel 01743 791860

Email theflower.shop@aol.com

Fresh Flowers

Plants, Greetings Cards

Wrapping Paper, Helium Balloons

and

Much More

Rodney Frederick Burt

Small Electrical work, Maintenance and lighting

Sparkyrod

rodneyburt20@gmail.com
07397516631

46 Snailbeach Shrewsbury
Shropshire SY5 0LT



Copywrite Print Design
@copywriteshrewsbury

Commercial Printing

*

Business & Personal Stationary

*

Ultra High-Speed Copying

*

Design Service

*

**High Quality Digital Colour
Printing**

*

Full Colour Envelopes

130 Longden Coleham, Shrewsbury

01743 360424

www.copy-write.co.uk

The oldest death masks might be those worn by Egyptian Pharaohs like King Tut, but more exact versions of the face became popular after the 14th century, until photography eventually replaced the practice. Napoleon Bonaparte, Mary Queen of Scots and George Washington were famously preserved. Napoleon's mask sold for £170,000 at auction a few year's ago.



A FRIENDLY SERVICE
FROM
JENNY, STACEY &
MICHELLE
WHO WELCOME
CUSTOMERS
OLD & NEW



HAIR BY JEN

3, STATION ROAD

MINSTERLEY

Tuesday 9 to 3

Wednesday 9 to 7

Thursday 9 to 9

Friday 9 to 5

Saturday by arrangement

Barber service 07557 144139

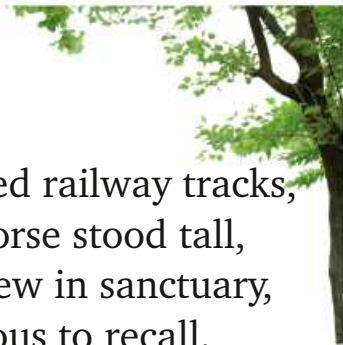
Telephone

01743 792548

For an appointment



A SNAILBEACH SPRING



When walking in the springtime
To Snailbeach from Plox Green,
Low down in the hedgerow,
Primroses were seen.

Bluebells in the woodland
Where hazel catkins hung,
There in the early morning,
Dawn choruses were sung.

Jackdaws on the Resting Hill,
Made a raucous din,
Circling the engine house
And making nests within.

Nearby stood the chimney,
A structure built to last,
Reminding all who saw it
Of the districts mining past.

Up above white hillocks,
Sand martins flew around,
Seeking homes in debris
Derived from underground.

Blackbirds in the coppice
And thrush on floral bough,
Songsters to the workman
Who toiled behind a plough.

Drifts of snowy blossom,
Meadows lush and green;
The arrival of the cuckoo,
Heard but seldom seen.

Beside abandoned railway tracks,
Broom and gorse stood tall,
Wildflowers grew in sanctuary,
Too numerous to recall.

The splendour of the season,
Down a country lane,
A time when village children
Would make a daisy chain.

A welcome to the swallows,
Darting to and fro;
Returning to the cowshed eaves
And building nests below.

New born lambs appearing,
Some skipped and others cried,
While a local congregation
Sang hymns for Eastertide.

From a cottage garden,
A Shropshire view serene,
Out to Bromlow Callow
And the countryside between.

My memory often fails me,
The function might be slow,
But clearly I remember
The spring of long ago.

David Weston
South Australia 2021



Computer Problems?



Friendly local IT support for home and small businesses: South Shropshire area
We can resolve most issues quickly and conveniently at your location.

Hardware & Software support
Troubleshooting, repairs & upgrades
Custom set up of : laptops, PC's & Tablets
WIFI and cabled network configuration
Broadband and internet issues
Malware and Virus removal
Security software setup
File rescue / data recovery
Printer issues
Backup solutions
Mobile service to your door
Remote support

Setting up a PC out of the box can be challenging, it often ends up in confusion resulting in a machine that is a pain to use. The manufacturers don't make it any easier, bombarding the user with multiple choices and unnecessary software.

By enabling easy access to the things that you like and frequently use and by placing the things that you don't need or use out of the way, we can provide you with a system that is secure, simple to operate and customised to your specific needs.



Contact: Rob
Tel: 01588-650567
Mobile: 07765-240718
Email: robwestonnet@aol.com

"At least Dick Turpin wore a mask" has been quoted at Chancellor's of the Exchequer, pub landlords, Ryan Air and anyone trying to make a quick dollar. Richard (Dick) Turpin (21 September 1705 – 7 April 1739) was an English highwayman whose exploits were romanticised following his execution in York for horse theft. He is also known for a fictional 200-mile overnight ride from London to York on his horse Black Bess, a story that was made famous by the Victorian novelist William Harrison Ainsworth almost 100 years after Turpin's death.



Investment Planning
Retirement Planning
Inheritance Tax
Planning
Intergenerational
Planning
Mortgages

It's important you make
the right decisions.

With over 30 years experience, we offer friendly professional advice on a wide range of financial services.



Lewis Wealth Management Limited.
St. James's House, Anchorage Avenue,
Shrewsbury SY2 6FG
Office: 01743 444 700
Mobile: 07967 430 392
Email: Neil.Lewis@sjpp.co.uk
Web: lewiswealthmanagement.co.uk

Your home may be repossessed if you do not keep up repayments on your mortgage.

As the grip of winter loosens and the hill comes to life with insects and summer birds, so our work changes from habitat management to access management and survey and monitoring. This year, as usual, we are carrying out 25 monitoring programmes across the hill for various habitats and species. This includes the annual count of yellow mountain pansies which are an indicator species for good quality acid grassland. Our volunteer group helps out with this task which involves counting along transects in some of the best fields and field walks on some of the others. The best time to see these lovely pale flowers is at the end of May or early June.

The first monitoring tasks that we do each year are a couple of early morning red grouse counts, where we count the number of calling males on the hill around daybreak. We weren't able to survey them in 2020 due to Covid restrictions and rather worryingly this year's count has picked up a crash in the population with only 7 calling males compared to 25 in 2019. The reasons for this are unclear as yet, but could be due to an increase in predators such as foxes and crows and has probably been exacerbated by the loss of heather cover after a couple of years of bad heather beetle attacks. Grouse are well camouflaged in heather and can hide away in older heather stands, but are more obvious on open ground and therefore more susceptible to predation.

One of the surveys due to be repeated this year are transects where we measure the density of nesting meadow pipits and skylarks, our most common ground nesting birds. This might give us an insight into whether there is an issue with all ground nesting birds or just the red grouse.

The last year has seen significantly greater numbers of visitors to the nature reserve and we estimate that we had over double our usual numbers in 2020. It is nice to see people engaging with their environment and green spaces, however this can have an impact upon the wildlife on nature reserves, particularly through disturbance. Disturbance of animals can have a variety of effects, but include the increased likelihood of predation, when for example adult birds are flushed off of nests by uncontrolled dogs and the reduction of the breeding condition of animals such as reptiles if constantly worried by people.

The revision of the Countryside Code at Easter was a welcome initiative as last year we saw an increase in litter, dog mess, overnight stays in the car park, toileting and fires from barbeques.

In order to combat some of these issues, we have installed a barrier at the car park as a deterrent to overnight parking and are employing a summer warden to encourage the sensitive visiting of the nature reserve, which is summarised by the overriding principles of the new countryside code – Respect everyone, protect the environment and enjoy the outdoors.



The good news on the Curlew front is that two of the chicks that were head-started by Curlew Country in 2018 and 2019 have returned to the area as adults. These birds have colour rings on their legs, something to look out for. From Simon Cooter and the Natural England staff at Rigmoroak.

J. Lewis & Sons

**Coal Merchants
Haulage Contractors
Hardcore, Sand & Gravels**

Tel: 01743 791366

jlewisandsons@outlook.com



NORMAN JONES

DOMESTIC APPLIANCES

REPAIRS TO
COOKERS, WASHERS
& DRYERS

Same Day/Next day
service where possible
All Work Guaranteed



NEW & USED SALES Washers

Bosch normally available
Delivered & installed to
working taps, etc.
Old Appliance Removed

Please ring
PETE: 07971 252069
Norman: 07816 875233
Home/Ansa: 01588 638677



Douglas Fairbanks, silent cinema's greatest swashbuckling hero, bid farewell to the glory days of the silent screen with this joyous romp of a film. As a sequel to Fairbanks' earlier THE THREE MUSKETEERS (1921), it more than surpasses its predecessor in lavish production values, good acting & nonstop action.

The character in the Iron Mask comes from an Alexander Dumas novel "The Vicomte de Bragelonne".



HAND MADE GARDEN FURNITURE FROM RECYCLED TIMBER

CHAIRS, COFFEE TABLES
BENCH SEATS etc.

E-mail: servatory@hotmail.com
Or call Graham on 01743 790 115
WHEEL BARROW PLANTERS FROM £10



A Local Personal,
Bespoke Service

www.wood-matters.co.uk

Tree Maintenance
Hedge Trimming
Woodland Management
Planting Solutions
Traditional Hedgelaying

01743 891231 Or 07974 300328

Seasoned Logs for Sale

Full Circle

The Sayces originated from the Shropshire areas of Bishops Castle, Norbury, Ratlinghope and Minsterley. They had large families the majority of the males worked as stone masons. Whilst I was researching the Sayce family I discovered two sisters living on Preston street Shrewsbury , they have provided me with a great deal of information



This is their story Great Grandfather Thomas James (1861-1931) married Elizabeth Jarrett 1882. Grandfather Lewis Harold 1882-1942 married Annie Brereton 1903

Father Harold (1904 – 1972) married Annie Page in 1929 at the Roman Catholic Cathedral town walls Shrewsbury. They lived at Abbey Foregate first child Patricia born in 1930 at the old royal Shrewsbury hospital followed by Margaret Ann in 1934 a son was born in 1936 but did not survive.

In 1938 Harold moved his family to Halesowen to join his father's building business.

Patricia & Margaret had a happy and contented childhood and did well at school leaving at 14 and 15 the both went into clerical work and did well in their chosen careers. They had an active social life, Margaret taking to the stage and appearing in various productions. Neither sister married.

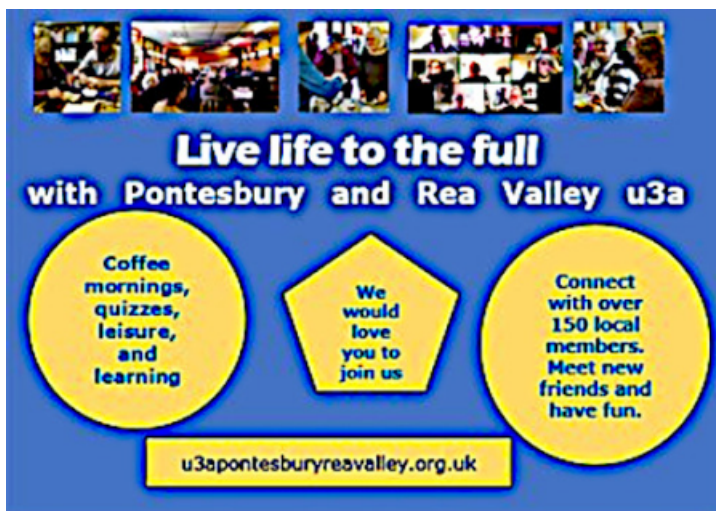
Their father Harold died suddenly in 1972 and is buried at Quinton Cemetery in Halesowen. The sisters returned to Shropshire in 1987 and moved to Preston Street settled into retirement and took care of their mother who passed away in 2002 and is buried with her husband in Halesowen.

In 2012 they moved to Church Stretton and this is where I met them, enjoying their company and interesting stories. After a few years they decided to return to Shrewsbury and reside in a classy apartment at the Old Royal Shrewsbury Hospital (the Parade) so back to their beginning.

Joan Evans Blackhole

The connection to the Evans family Black Hole is George's mother was Kitty Sayce, daughter of Wilfred Harold and Nellie Sayce (nee Pugh) from Minsterley . Still working on that connection.

Our U3A offers opportunities for new learning in a relaxed and friendly setting. Members are welcome where ever they live as long as they can get to our activities in the Rea Valley. Our Third Age is the stage when we have reduced our working life and have time to spend on existing interests or to develop new ones. Perhaps most importantly our group offers a chance to meet a wider range of people and make new friends. Our members enjoy using some of their leisure time to discover and acquire new skills and help others do the same. For more information please contact:
Susan Lockwood at
susanlockwood345@btinternet.com
Home phone: 01743 791092
Mobile: 07854 110271





Zorro was created way back in 1919! Zorro bears so many similarities to Batman, it's astounding. Kane loved Zorro's dual identity and mainly used that to develop Bruce Wayne and Batman. ... Zorro had his own secret lair, like Batman, and the entrance to his hideout was behind an old grandfather clock, also like Batman.



METAL RECYCLING



RECYCLE YOUR OLD SCRAP METAL

WASHING MACHINES, COOKERS, CARS, VANS, CAST,
BRASS, COPPER, LEAD, BATTERIES, CABLE, FARM
SCRAP, OLD CENTRAL HEATING SYSTEMS, ETC.

**NO LOAD TOO BIG OR TOO SMALL
FREE COLLECTION!**

**CALL - 07989 050 276
OR - 01743 791 493**



Dave Ashworth

Oil Heating Engineer

Service - Breakdown

Mobile : 07920 194107 | Home : 01743 791202

**Double Vision
Mobile Bars**

Double your fun!

Double Vision cater for all occasions,
from weddings, anniversaries and village fetes,
to business parties and corporate events.

Mobile Bars • Hog Roasts • Candy Carts

Jess Harding • 07828 785219

info@doublevision-mobilebars.co.uk www.doublevision-mobilebars.co.uk
facebook.com/DoubleVisionMobileBars

GLADRAGS

New & Used Dress Agency

Call in to see our selection of
quality classic, casual & designer
clothing and accessories at
affordable prices

Spring is just around the corner!
Time to re-vamp your wardrobe.
We have now taken in quality used
clothing and accessories for the
spring season.

Should you require our 'collection
and return' service for a complete
wardrobe clearance, please call
one of our team for information.

UPSTAIRS AT
CONNECTIONS STORE,
SHREWSBURY ROAD,
PONTESBURY, SY5 0QD

Visit our Tea Room for
Ladies that Lunch!

T: 01743 790600

M: 07795 592716

Evenings: 01743 791935

E: sue.lindsay@stiperstones.net



**We are now taking
in new stock.**

ADVERTISING SPACE AVAILABLE

10 monthly editions per year
(No January or August edition)
Per annum.

Tenth page – £25

One fifths page – £35

Two fifths page – £70

Full page – £130

sammy@snailbeachdistrictnews.co.uk

Telephone: 01743 791999

Village Hall News

Now that Covid restrictions are lifting we look forward to welcoming back some of the regular groups to the hall and the committee can meet to start to plan some events. The last time the committee was able to get together was in December. The committee is always looking for new members so if you would like to get involved then please contact me.

We are fortunate that the hall has received support funding from the Council during the covid shutdown which has more than covered our fixed costs at a time we have had little income other than the car park honesty box. The hall has also been used as a base on occasion by Network Rail who have been undertaking research work underground at the mine site, this has also boosted our funds.

Not all of you may know but the hall also owns the playing field and play area which requires regular maintenance. Thanks to Anita Evans who organised volunteers for a spring clean of the play area and John Davies and Nick Southwick who repaired the fence. Also Graham McMillian who does such a good job of cutting the grass and storing the mower which is going to need replacing soon.

There are proposals to establish a wildflower verge on hall land adjacent to the road which is the subject of a separate article in the newsletter.

Julian
Bromhead
Chairman
jcbromhead@hotmail.com



TAI CHI

Unless things change again suddenly, the Tai Chi class in Pontesbury will be starting again on Tuesday 18th May. This takes place at 2.00pm until 4.00pm in the Public Hall.

As before the recent lockdown, we will all have to enter and leave the hall wearing masks and maintaining a two metre distance from one another. Only the disabled toilet may be used.

I hope to see everyone back again; there is plenty of room in the hall.



Jenny Alldridge

Pontesbury & District Gardeners Association Photo Competition

As part of our Show, to be held on Saturday 28 August, we will have a photo competition; the topics for this year's Show are:

- Something made during lockdown.
- A weather picture.
- Item of footwear.
- A time piece.

For the Children's section the subject is:

- Your pet.

The photographs should be prints with a maximum size of 7x5" / 18x13 cm, and be unframed. More details of the show will be available in the Show Schedule which will be available at the Trading Post and other outlets in the village later in the summer.

The Trading Post is situated in the Old Station Buildings on Station Road and is open every Saturday from 9.30 to 12 noon.

RICHARDSON House of Hair

Katie & Avril welcome you to a
Creative Organic 100% Vegan Salon



Open Tuesday - Saturday

appointments only

01743 790386

Enterprise House

Pontesbury



Find us on Facebook



NEIL JONES Motor Services

Tyres, Exhausts, Bodywork Servicing and Pre MOTs etc.

At Green Farm
Stiperstones, SY5 0LZ
Telephone 01743 791 783
Mobile 07810 232 309



Throughout history there were many differences as well as many things in common about the value masks held to different societies and civilisations. The pre-Columbian Masks like the Shamans of Andean tribes represented devils and gods and were used as a way of communicating with the afterlife.

In Africa, masks were used as a way to connect with their ancestors. They were also used as a way to transform into an animal or as a way to transgress the barrier to the past or the future. Many African tribes believed that their masks gave them a direct connection with the supernatural.



**Simplifying Computers
and Technology
across Shropshire**



- Computer Repairs & Upgrades
- No fix, no fee
- Cloud Storage
- Data Recovery
- Internet / WiFi problems fixed
- Backup Service – 3 copies of your data is crucial
- Business Support
- Website and Email Hosting
- Local Office in Pontesbury
- Smart Phones, Smart Speakers, Tablets, Laptops, Desktops, TVs, Security Cameras
- We sell 3 grades of Electronics – “New”, “Open Box” or “2nd User”, min 1yr warranty
- Optional installation
- Check our website for stock
- One to one & group Tuition

Letter from Westminster – May 2021

Philip Dunne



Last month in the House of Commons I paid my condolences to Her Majesty and other members of the Royal Family, and joined other MPs in paying tribute to HRH The Prince Philip, Duke of Edinburgh.

For anyone under 75, Prince Philip as a key leader in our national life is all we have ever known. So his death marked the end of an era, and has left Her Majesty with an inevitable void, as he has been her rock of support throughout her remarkable reign.

The Duke of Edinburgh arrived on our shores as a young boy, lacking immediate family, having been educated initially in France in an American school, before going to Gordonstoun in Scotland. These experiences clearly forged his determination to help other young people to develop the confidence to shape their own futures, as he did as a young man. He did this through establishing the Duke of Edinburgh award scheme, from which many young Salopians have benefitted and continue to do so.

His wartime experience (where he was mentioned in dispatches for his service with the Royal Navy) and distinguished military service gave him and others of his generation an abiding sense of duty. It also instilled the importance of remembrance of those who had served their country and paid the ultimate sacrifice.

As a Commonwealth War Graves Commissioner, I know the many memorials and dedications he attended were deeply appreciated by the Armed Forces community. Perhaps most telling was one of the earliest, when unveiling the Second World War extension to the Chatham Naval Memorial in October 1952, where he pointed out that like all others who served in the Royal Navy during the war, he had lost many friends and shipmates commemorated there. He could speak to and for veterans in a way that only someone who has served can do.

Prince Philip was always interested in conservation, but his visits to the southern oceans in 1956 sparked his concern about threats to nature, which made him a pioneer of preserving the environment. He was instrumental in establishing the World Wildlife Fund, and his enthusiasm never waned. He visited hundreds of WWF projects across five continents, over five decades. But he also used his position to promote conservation issues, inspiring people, from members of the public to world leaders, to protect nature and wildlife. This passion has been clearly passed on to his children and his grandchildren. It will be an enduring part of his legacy.

Many in Shropshire will have fond memories of seeing the Duke of Edinburgh in 2012 as part of the Diamond Jubilee Tour, when he accompanied Her Majesty attending a pageant at RAF Cosford.

He also visited South Shropshire in 2003, with Her Majesty attending the Wenlock Olympian Games, and choosing perhaps provocatively to have lunch in the Discovery Centre in Craven Arms, in preference to Ludlow, the more obvious food capital of Shropshire, where they concluded their visit.

I am sure we will remember the life of Prince Philip for his dedication to our country and our Queen, and for the wit and candour he brought to his role, challenging all who met him to strive to do better in helping others.

A M Batchelor Builders Ltd.

Renovations, Extensions, Property Maintenance, Alterations and Hard Landscaping.
Over 30 years of experience. Free estimates and advice.



A M Batchelor Builders Ltd.
Coppice Farm
Snailbeach, Shrewsbury, Shropshire.
SY5 0NS
Mobile: 07785 531 910
Email: andybatch36@hotmail.com



- Electrical Installation
- Fault Finding & Repairs
- Consumer Unit Changes/Upgrades
- Inspection & Testing of all Electrical Installations
- EV Charge Point Installation
- Verification & Testing of 3rd Party Installations
- Building Control notification as required

C F ELECTRICAL

Domestic, Commercial, Industrial

Fully approved & insured
DBS & CRB cleared electrician

Contact me for a free no obligation quote
No job is too small.

Contact: Carl Fleming
Tel: 07482 088298
Email: info@cfelec.co.uk

Mark Abrams

07515 441954

mwagardencare.blogspot.com
mwa.gardens@gmail.com

Lydcote, The Lyde



MWA Garden Care
Grounds and Garden Maintenance

In Asia, modern traditions of famous Japanese Noh theater formed in the 14th century by famous author and musician Kan'ami and his son Zeami. In this heavily codified and regulated art form that is still performed today, single theater play consists of five musical drama segments with shorter comedic plays being played in between of them. Masks that are here used for roles vary widely, reaching a number of over 450 different models. The most popular ones are those of women, children, ghosts (both good and bad ones) and old people, covering all genres, ages, and emotions.



The rapid Lateral Flow Tests are available
for people who do not have symptoms.



Everyone in England is now able access two rapid coronavirus tests a week, after an extension of the Government's testing programme.

The Lateral Flow Test kits, which can provide results in around 30 minutes, are available to collect for free at many locations.

Opening times at walk-in symptom-free test centres are:-

THEATRE SEVERN, Frankwell Quay, Frankwell, Shrewsbury SY3 8FT (test, collect tests, or both)

Tuesdays–Saturdays 8am–4pm

THE LANTERN, Meadow Farm Drive, Harlescott, Shrewsbury SY1 4NG (test, collect tests, or both)

Mondays 8am-6pm Wednesdays 8am-6pm Thursdays 8am-6pm Saturdays 8am-4pm

(Out of these hours, please collect tests from library)

HALO, Craven Arms Community Centre, Newington Way, Craven Arms SY7 9PS (collect only)

Mondays 11.30am–7.30pm Fridays 8am–4pm

(Out of these hours, please collect tests from main reception)

STAGE DOOR, Aston Street, Wem, SY4 5AY (test, collect tests, or both)

Mondays 11.30am–7.30pm Wednesdays 8am-4pm Saturdays 9am–3pm

RAVEN HOUSE, 129 Cheshire Street, Market Drayton TF9 3AH (test, collect tests, or both)

Mondays to Fridays 8am–5pm

THE VICTORIA CENTRE, Victoria Road, Oswestry SY11 2HT (test, collect tests, or both)

Mondays to Fridays 8am–5pm

OLD POLICE STATION Tudor Way, Shifnal TF11 8DJ (test, collect tests, or both)

Mondays to Fridays 8am-5pm

The Fit Bit

This morning the sun was shining, the bitter chill in the wintery wind has receded (at last!) and we met up at the school playground at 9 am for our weekly Fit Club.

Despite it looking like a picture perfect morning for fit club, some folks arrived reporting feeling a bit low. 'How much longer can I cope with this restricted life?', 'How do I deal with going out amongst crowds of people?', 'I just feel sluggish...' these were some of the topics of chat as we set up for our session.

I invited everyone just to park their headstuff for an hour; the worries, the concerns, the fears and anxieties. If we get out of our head and into our bodies – it can be a great break – a holiday- from the whirring mind, looping round the usual stuff. Instead we feel our capability, our flexibility, our power and strength.

There are many reasons why physical activity is good for our bodies – having a healthy heart and improving your joints and bones are just two, physical activity is also beneficial for our mental health and wellbeing?

When you are out and about and being active in a safe and socially distanced group we are meeting challenges and making the most of them, feeling connected to our community and surroundings; friendship, chat, the landscape and having a sense of purpose and feeling valued.

After the session, an attender messaged me: 'I cant find the words to tell you how much I enjoyed this morning! And I 'm going to carry on....'

FIT AFTER FORTY WITH SAL

Fit Club. Sunday 9 am, Stiperstones School Playgroud.

Alfresco Silent Disco Aerobics. Wednesday 6 pm. Stiperstones School Playground.

£7 a session.

Feel good
Effective
Functional fitness

Harry Coyle

Landscaping

*Lawns, Hedges, Hardscaping, Decking,
Slabs & Fencing*

hcoyle@live.co.uk

Mob1. 0748 4 205 925

Mob2. 07866 007 428

HIGNETTS

of Pontesbury Ltd

est. 1919

Family run fresh food retailers

Locally sourced meat
Fresh fruit and vegetables
Fair trade foods
Bread, pies, buns and cakes
all baked on the premises daily

Freshly filled sandwiches
baguettes and rolls

Groceries at competitive prices
Garden plants and flowers
Compost and grow bags

UPS parcel collection
and delivery hub

Tel: 01743 790228
www.hignetts.co.uk



PHIL GRIFFITHS

Local Plumber



Tap Replacement and Plumbing
Repairs Undertaken

New Taps Supplied and Fitted
Home Choose Service

Established 35 years

Prompt and Professional
Pontesbury based



Tel 01743 790046

Mobile 07970 010148

HOPE VALLEY RADIO

01743 791 379

07811 449 039

*****www.hopevalleyradio.co.uk*****

TWO WAY RADIO SALES & HIRE

TV AERIALS

SATELLITE DISHES

REPAIRS*SUPPLIED AND INSTALLED*



John Powell's Home Improvements

**For any Plastering, Tiling, Plumbing
and General Maintenance.**

Can also fit kitchens and bathrooms.

Fully Insured.

**NO JOB TOO BIG OR TOO
SMALL**

Call John on

Home: 01743 791 627

Mobile: 07838 8015005

Cheyenne Tours

with Anne Preece

Welcome to 'Cheyenne Tours.'
After many years of being involved
with coach tours I hope you will find
our Day Trips both interesting and
very reasonably priced.

We offer a friendly and enjoyable
service with coaches that are sourced
locally from *Longmynd Coaches*,
nr. Shrewsbury in order to keep
pick up points to a minimum.

For further details
please contact me on:

07966459806 or 01746 787237.

annepreece@icloud.com

or

Val at Longmynd Travel
01743 861999

We reserve the right to amend terms,
excursion prices and other details.

**ALL OUR TOURS AND
PRICES
CAN BE VIEWED ON THE
BACK COVER**

PROPERTY REQUIRED

We are cash buyers
looking for a house to
purchase. We are looking
for a detached house,
preferably with three or
more bedrooms and, hopefully, with some
land say 0.5 acre or more. We have lived
in the Stiperstones/Pennerley area and
really love it, but we would consider a
broader area, west of the A49. We will also
look at properties needing renovation or
extension to meet our needs.



If you are thinking of selling, please do
contact us. As we've said, we are cash
buyers and are prepared to get things
moving quickly.

Robert and Grace Davies
07770 988348 robertd299@yahoo.co.uk

The Stiperstones Inn

Upcoming Events

Knitter Natter

10am Every Tuesday!

Big Money Bingo

8.00pm Monday 10th May

Pub Quiz

8.00pm Monday 24th May

Big Money Bingo

8.00pm Monday 7th June

Pub Quiz

8.00pm Monday 21st June

Christmas in July

Christmas Quiz and Bingo

8.00pm Thursday 22nd July

Christmas Dinners

Friday 23rd - Monday 26th July

Christmas Carols

8.00pm Saturday 24th July

Dash & Dawdle Special

6.00pm Monday 26th July

Christmas in July

*8.00pm 22nd July
Christmas Bingo & Quiz*

*23rd July - 26th July
Christmas Dinners Available
Get together with family and friends
to celebrate the Christmas we missed in 2020*

*8.00pm 24th July
Christmas Carol Service*

*6.00pm 26th July
Dash and Dawdle Special
A village event just for fun!
With donations to Severn Hospice*





On Sunday 13th June

there will be a garden sale trail in and around the villages of Snailbeach, Stiperstones and Pennerley.

A number of households are selling goods from their gardens, kind of like car boot sales without the crowds.

Others are selling crafts and wares from their businesses. Some are selling to raise money for charity.

We hope to attract those who like car boot sales, markets, a chat, a nice walk round our area and a nosey round other people's gardens.

A map/directions will be available.

If you intend to open your garden and want to be included on the map please contact

Claire Corfield on Facebook or by emailing clairemcmillan@hotmail.com.

Further details will be posted on our Facebook event page "garden sale trail snailbeach, stiperstones, pennerley and immediate areas" and an update will be in the next village newsletter.



Anne Whysall

FLORISTS

Fresh flowers, plants and a large range of giftware items

Main Road, Pontesbury, SY5 OPY

01743 792333

Opening Times

Mornings only 9.00 to 1.00

Monday to Friday

www.annewhysall.co.uk



David Prowse (July 1, 1935 - November 28, 2020) was a British bodybuilder and weightlifter who became an actor. He played Darth Vader in the Original trilogy.

Early in his career Prowse was in a film called Frankenstein and the Monster from Hell, produced by the English Horror Film Company, Hammer Studios. Prowse played the role of the Frankenstein Monster. In the same film, Peter Cushing who would later play Grand Moff Wilhuff Tarkin in Star Wars: Episode IV A New Hope, plays Dr. Frankenstein.

Crowning Glory



Val welcomes customers old and new,

Opening hours,

Tuesday - Friday 9.00am - 5pm

Saturday 9.00am - 1pm

Telephone 07768402491

for an appointment.

Bennett's Business Centre, Main Rd.

Pontesbury

Join Val on Facebook

@CrowningGloryPontesbury

Feel Good Feet

Foot Health Practitioner

Julie Foster

DipFH MCFHP MAFHP



Mobile foot treatments in the comfort of your own home

To book an appointment call

07772 086846

Routine home foot care visits include:

Toenail – Ingrown toenail

Thickened nails – Fungal infections

Lacuna – Corn removal – Callus reduction

Cracked heels and fissures – Diabetic foot care

Verrucae – Pedisafe nail reconstruction

Warm wax therapy treatments

Manicure – Pedicure – Gel nail polish

Fully insured and DBS checked

Registered with the British association of foot health professionals

PROPOSALS TO ESTABLISH WILDFLOWER VERGES AT THE VILLAGE HALL

The hall committee and other supporters are developing proposals to establish a wildflower verge on village hall land adjacent to the road as identified on the plan below. The principal benefits of the scheme would be to:

- *Introduce ecological diversity using native plant species and to encourage insects.*
- *Brighten up the approach to the village.*
- *Reduce the requirement for cutting and maintenance of the verge.*

Detailed planning will take place this spring and summer with soil preparation and seeding taking place in the autumn. As part of the preparation the verge (excepting a narrow strip immediately adjacent to the highway) will not be cut until the end of the summer. This may look unsightly in the short term, but the idea is to remove nutrients from the soil and to see what species are already present.

In the autumn, some trial plots would be prepared, seeded, and then evaluated next year to see what gives the best outcomes. To prevent vehicles parking on the verge a second line of wooden posts would be installed adjacent to the road edge. A narrow strip would continue to be strimmed to keep the highway clear and some paths cut to connect the car park to the Lordshill road. The mine truck, which was at the school and currently in storage, would be relocated onto the verge to form a distinctive feature to the village approach.

If you would like to get involved then please contact me.

Julian Bromhead Hall
Chairman
jcbromhead@hotmail.com



SHROPSHIRE LOVE NATURE FESTIVAL

Shropshire Climate Action Partnership

WHAT IS IT?

A month long festival to involve, inform and enthuse Shropshire residents and visitors about our biodiversity and the current crisis it is facing. We need to tell people the truth about this and how we can all help to fix this.

WHAT'S THE POINT ?

To convey the following messages through fun, interactive and informative activities and events:

- The connections between climate change and the decline of Nature (biodiversity/habitat loss.)
- The urgent need to preserve and enhance our biodiversity for human existence
- The health and well-being benefits of nature
- We all have a part to play and we can all make a difference.
- Precipitate actions that will benefit Shropshire's biodiversity

WHY IS IT NEEDED?

"We are facing a global extinction crisis which has implications for every one of us. It's tempting to assume that the loss of wildlife and wild places is a problem that's happening on the other side of the world. The truth is that the UK is one of the most nature-depleted countries on the planet and the situation is getting worse." Sir David Attenborough 2021

WHEN AND WHERE?

August 16th to 12th September 2021

Anywhere in Shropshire/Telford and Wrekin
get this message out.

For more details please contact: Liz
elizabethknowles1@googlemail.com



Shropshire Wildlife Trust



A TALE OF TWO KITTIES

CHAPTER 6: CATS IN QATAR

The driver took me from the bustling modernity of Doha airport to the Qatar Oil Company campus in Dukhan. On the 2 hour journey I saw many wandering camels and realised how much I loved and missed them. Dukhan reminded me of the frontier towns in old western films. It had a petrol station selling petrol at the equivalent of 7p a gallon and a few shops supplying a meagre range of necessities. The food shops sold mostly Indian food with the odd European tin of something sneaked in. However once inside the heavily guarded entrance to the residential area it became surprisingly similar to a manicured housing estate in Europe. This estate was built for the professional employees. There was a total contrast when it came to the manual workers. They were all men and shared rows of attached huts. These huts only had 2 bunks and a table in them. Four men shared and two would sleep when two were out working then they would swap. There was a toilet and shower hut at the end of the rows.

I always felt guilty that my kitties and I were housed in a lovely single story villa with small garden behind and front garden with sea views. I had a five minute drive to the sailing club in one direction and five minute drive to the golf club in the other. The golf course was brown. Oil had been poured over the sand dunes and baked hard in the sun. There was a grander club in Doha, being the capital, everywhere had green grass, watered daily.

Every fortnight a group of us would meet to roam around the desert looking for pink paint spots as members of Dukhan Hash House Harriers. Occasionally it would be the turn of myself and another to mark the course putting in false trails at random. At the end there was a fun ceremony in the dunes with a glass of something and much bantering, scolding and joking.

My birthday was on a chilly day in February. I decided to go to the sailing club even though I knew nobody would be there. I often went to walk along the concrete prom which separated the training area from the open sea. I could see workmen in the distance but no-one else. Dolphins often played with us as we sailed out in the open waters but they hadn't been around for quite a while.

On impulse I shouted at the top of my voice “Dolphins it's my birthday!”. Instantly a mother and baby and, a little way behind, a third dolphin swam close up to the concrete wall which I was standing on. I shrieked with delight and amazement and still get goose pimples at the memory.



I regularly visited friends who lived in Doha.

In their garden they had been feeding a pregnant stray cat and then later her new born kittens. The kittens were beautiful, they were back, white and fluffy and looked like Welsh sheep dogs. One weekend my friends asked me to rescue one and find a home for him. Their Welsh neighbour was annoyed with the cats using his garden as a



toilet. He had put poison down and killed two of the three kittens. This last kitten was about three months old and called Shaggy. I took the kitten home knowing no-one would want him, so now I had three. A day later he wandered off out of the garden and was gone for a long time. I worried he may have got locked in a garage or store room. It was Friday and all the men were in the Mosque as I quietly crept around whispering 'Shaggy'.

It took me 2 hours to drive to Doha where all the shopping malls and fabulous restaurants were. It was also where the Outlet Warehouse was. This had boarded up windows and looked like a closed up, deserted, building from the outside. Inside it was an alcohol outlet, where foreigners could get their supply of alcohol. We got a licence from the government as we did in Oman. If someone was involved in a car accident on the way home and was found to have alcohol in his boot, he would be arrested and fined and possibly imprisoned. Even though it was legal for them to buy the alcohol it was illegal to be caught with it! So although my journey back to Dukhan was an improvement on the 3 hours it took from Muscat to Sur in Oman, it was still quite tense.

Christmas in Doha was a surprise. Qatar is a strictly Muslim country and yet the shops and malls were full of Father Christmases and all the baubles and trinkets of the Christian festive season. High class stores sold dishes and mugs along with table cloths and serviettes decorated with Christmas themes. The most incongruous being holly and robins, which I doubt any Qatari child would have seen before.

I had a lovely 60th birthday celebration at the golf club shared with anothers' 50th birthday celebration. All the people from the golf, sailing and running clubs had a wonderful night. I left Qatar to retire to Southern Spain shortly after, this time with 3 cats.

JOHN W. F. BEBB

Building, Civil Engineering,
Surfacing and Steel Fabrication
Contractors

Danny Bebb

The Bungalow,
Weston Road,
White Gritt,
Minsterley,
Shrewsbury, SY5 0JJ

Phone: 07815 801 871
Fax: 01588 650 386
Email:
johnbebb@hotmail.co.uk

LOGS FOR SALE

Bulk Bag & Net Suppliers

Free delivery on bags
within 10 miles.
Nets for collection.



Danny Bebb
Weston Road,
White Gritt,
Minsterley, Shrewsbury,
SY5 0JJ

Phone: 07815 801 871
Fax: 01588 650 386
greenacreslogs@hotmail.com



SKIPO BAG 07815 801 871

Order your bag (or multiple bags), fill them with
your waste and leave them in a vehicle
accessible place, call us and we will collect.

CHEAPER & EASIER THAN A SKIP!

£72 Inc VAT for bag & collection. Discounts on
multiple bags from the same address at the
same time



JOHN W. F. BEBB SMALL TOOL & PLANT HIRE 07815 801 871

Phone for details on all Tools & Plant.
Delivery available.

Danny Bebb

The Bungalow,
Weston Road,
White Gritt,
Minsterley,
Shrewsbury, SY5 0JJ

Phone: 07815 801 871
Fax: 01588 650 386
Email:
johnbebb@hotmail.co.uk

Mini Digger £50
High Lift Dumper £40
Magic Screed £40
Bull Float £30
Wacker Plate £30
Stihl Saw from £25
Pointing Guns £10
Grinders from £15
Welder/Generator £50
Trailer Hire from £15
And much more!

Better Broadband for your community

**Ultrafast Broadband where
other providers cannot reach**

**We are bringing
ultrafast broadband to your area**

Unlimited broadband from **30mbps** to a whopping **900mbps**

Register your interest now on 03337 000 227

or visit our website at: www.securewebservices.co.uk



SWS BROADBAND

an **(R)(B)(B)(S)** company

 **03337 000 227**



**The Yard at
Green Farm
Stiperstones
Shrewsbury
SY5 0LZ**

Ben Morris

JIB Approved Electrician



Call 07966 788791
 Quotations 01743 792013
www.benmorriselectrical.co.uk
 Efficient friendly service from an
 experienced Electrician

- Specialist in House Rewiring
- Inspection and Testing of Properties
- Extra Sockets & Lights installed
- No job too small
- We will fit your own newly purchased lights etc.
- All work VAT free
- Fully Insured
- All work certified and notified to building control
- Free Quotations
- Competitive Hourly Rates

All Shropshire Mobility

Freedom For Living!
 vehicle adaptation specialists

hand controls
left foot accelerators
car boot hoists
person hoists
swivel seats
secondary control systems ...and more!

Unit 11
 Malehurst Industrial Estate
 Minsterley, Shropshire
 SY5 0EQ



info@allshropshiremobility.co.uk

*Offering a bespoke service to both
 Motability and private customers*

Tel: 01743 790 879

The Phantom is based upon a man named Erik who was born in a small village in Normandy, near Rouen. He was born with a horribly disfigured face, so his parents abandoned him when he was eight. A circus basically took him, and for 7 years he was used as an attraction.

Just as in the story the real-life Erik had his own personal "Box 5" at the opera house. He even had a hollow column built next to it where he could come and go without being seen. Erik did fall in love with a singer who performed at the Opera Garnier. But finding himself rejected he kidnapped this singer after an evening performance. She was found 3 weeks later, and shortly afterward she left Paris.



Cold Hill Shelters

Mark Owen

Design, build and installation

- Camping Pods
- Mobile Horse Shelters
- Stables
- All types of fencing, agricultural & domestic
- General Repairs to Outdoor Buildings
- Repairs to storm damaged buildings
- Garden Sheds & Garages

07973 329944

Email: info@coldhillshelters.co.uk

www.coldhillshelters.co.uk



Pontesbury GARAGE Services Ltd

COMPLETE SERVICE AND REPAIR CENTRE

- All vehicle repairs
- Servicing - all makes and models
- Tyres - Clutches - Cam Belts
- Brakes - Suspension
- MOT testing station

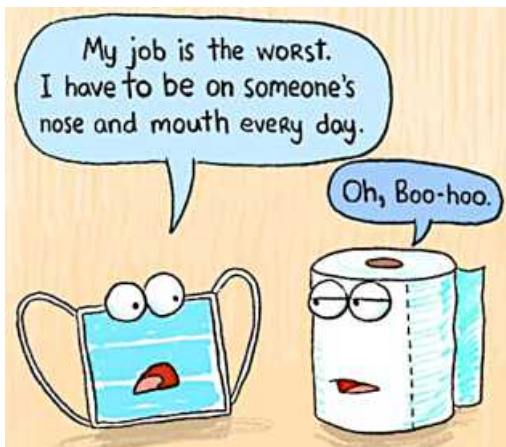
Unit 12 - Malehurst Industrial Estate
 Minsterley - Shropshire - SY5 0EQ

info@pontesburygarageservices.co.uk



FAST - FRIENDLY - RELIABLE

Tel: 01743 296162



A beginners and a tricky puzzle from 'Sudoku of the day'.

		6				5		8
1		2	3	8				4
			2			1	9	
				6	3		4	5
	6	3	4		5	8	7	
5	4		9	2				
	8	7			4			
2				9	8	4		7
4		9				3		

					2			4
2		5			6	8		7
	1		5					
	6	2		3				
7		8				6		5
				6		4	2	
					7		8	
4		1	6			9		2
9			2					

Why won't he wear a mask? He suffers from toxic mask-ularity.

I recently bought my pet duck a mask, to protect it from corona virus... It's nothing flashy, but it fits the bill

Masks are like a bra. If the strap slips and it is not in place, people keep pointing it out but if you forget to wear one, people just stare and say nothing.

Dogs are getting stressed and confused because they've noticed their owners are now wearing masks. Cats are unaffected though as they're yet to notice their owners at all

Warning - The Snailbeach District News may be read without a face mask but only in the privacy of your own home.



Masks have always been a big part of wrestling. Mil Mascaras – Considered to be one of the greatest lucha libre performers of all time, Mascaras, whose name means ‘a thousand masks’ in Spanish, has never been unmasked. A film star in his native Mexico, Mascaras was considered the first truly international luchador and was added to WWE’s Hall of Fame in 2018.

MSH Electrical Services

All types of electrical work

PAT Testing, LED Lighting

Central Heating Systems

Free Quotes | 40 years experience

Mike Hockly

Mob: 07961278028

Tel: 01743 891610

email: hockly342@btinternet.com

Nipstone Campsite

The Bog SY5 0NJ

Tel: 01743 792073

Email: timrm@mail.com



Small friendly site for tents,

located 200m off the Shropshire Way

1. Campfires allowed, bring your own wood.
2. No bins on site. Please take your rubbish home.
3. £6 per person per night. Under 4's free.
4. COVID. Sanitiser spray in all facilities
5. Freshly roasted coffee machine on site.

T P Hockly

Building Contractor

Timber Framed Buildings & Extensions
Brickwork and Plastering
Driveways, General Building Work
& Building Maintenance
call Tim on 01743 791114
Mobile 07814 498 524

**RESPONSIBLE DISPOSAL AND
REMOVAL OF UNWANTED BEE AND
WASP NESTS**

Reasonable Rates



Call Tim Hockly 07814 498524



Smiths Butchers Minsterley

01743 791863

Smiths Butchers: Holly House, Minsterley, SY5 0BA.

**We sell: Local & Exotic Meat, Game, Pies,
Fruit, Veg, Cakes, Bread, Milk, Cheese, Tinned
Goods, Cereals, Tea, Coffee, Sugar, Biscuits,
Crackers, Crisps, Sauces, Jams & Pickles.**

You can find us just over the Bridge in
Minsterley and opposite the church.

Smiths can be relied on to supply the best
British bred meats at competitive prices.
We have weekly special offers with a range
of great value freezer packs.
- and our pies are something special!
01743 791863

**ELECTRICAL
WERLEE
SOLUTIONS**

ELECTRICAL CONTRACTORS

PETER LEE

T: 01743 791411 M: 07727 610626

www.werlee.co.uk peter.lee@werlee.co.uk

Brookside Cottage, Crows Nest Dingle, Snail Beach, Shropshire, SY5 0LU



S & D Garden Services

Gardener Handymen

If you need help with your garden,
look no further!

Contact Darrell – 07340 716 311

or Steve – 07799 468 898

Lawn Mowing, Hedge Cutting and
General Garden Maintenance



Heather Kidd

Local Shropshire Councillor
for
Chirbury & Worthen
including Snailbeach and
Stiperstones

Telephone: 01938 561 651

Mobile: 07980 635 518

Email:

heather.kidd@shropshire.gov.uk

Facebook: Heather Kidd

www.heatherkidd.org.uk

Speeding Traffic

I have had a great number of complaints over the last few weeks about speeding traffic.



Lockdown has unfortunately encouraged the irresponsible few to drive at excessive speeds through our villages.

Although we've had the speed camera van back its not appearing often enough or at the right times to act as a real deterrent.

Whilst I continue to put pressure on the Safety Camera Partnership to bring the vans back on a more regular basis and at the beginning and end of the working day I've been putting up a number of temporary signs up in Marton, Brockton, Worthen and Stiperstones. If you would like some get in contact with me via the number/email below.

The Parish and I will continue to press Shropshire Council to bring in the 20mph zones outside schools and other traffic calming measures.

If you manage to take down registration numbers or company names, let me know and I will contact their companies.

If you have had a new bin recently and would like some new '30 MPH' stickers to help slow the traffic drop me a line or give me a call.

Have your say in how your hospitals work

The trust that runs Shropshire's acute hospitals is asking members of the public to get more involved in the way services are delivered.

From tomorrow (21 April), for four weeks, The Shrewsbury and Telford Hospital NHS Trust (SaTH) is giving people the opportunity to share their ideas and on how it can involve them more in what happens at the Royal Shrewsbury Hospital and the Princess Royal Hospital in Telford.

Julia Clarke, Director of Corporate Services and lead for the Public Participation Team at SaTH, said: "We know that local hospitals are really important to our communities and we take this responsibility very seriously.

"We believe hospital services improve when we listen carefully to what people tell us and we respond to what they say. We want to give our communities a much bigger say in how we work and we think people will have lots of brilliant ideas to help us involve them more.

"We recognise it's not always easy to get your voice heard and this is why we're holding an open, honest and anonymous online conversation. This is an opportunity for everyone in our communities to share their ideas with us.

"You will also be able to read and comment on what others have shared, and vote on what you agree or don't agree with.

"We will use the insight generated from this online conversation to inform our Public Participation Plan, which will be published in July 2021. We know some things need to change, and we need your help to tell us what we should be striving for and what we can do together to involve you more."

The online conversation opens on Wednesday. Visit www.sathgetinvolved.org to register your interest in joining this conversation.

Many thanks, Dave Burrows Head of External Communications, The Shrewsbury and Telford Hospital NHS Trust

Telephone: 07784 015931 | Email: david.burrows4@nhs.net

PLOUGH GARAGE

Established 1919

**Servicing & MOTs
Diagnostics
Repairs-Tyres
Air Conditioning
Pontesbury SY5 0RJ
01743 790270
ploughgarage.co.uk**



10 monthly editions per year
(No January or August edition)

Per annum.

Tenth page - £25

One fifths page - £35

Two fifths page - £70

Full page - £130

Please contact the editor at
sammy@snailbeachdistrictnews.co.uk

VPJ Electrics & Property Services

For all your domestic electrical
installation and property maintenance

Contact Paul Jones

Tel: 07976 909 434

Email: vpjones40@gmail.com

"No job too small"

Free estimates

The tradition of the mask started in the 13th century when Venetians would hold celebrations and parties from December 26th until the start of Lent and wear elaborate masks to conceal their identity. These parties were the only time when the lower and upper classes mingled together. Aristocrats and peasants, disguised by their masks, played out their fantasies together. They indulged in illicit activities like gambling, clandestine affairs, political assassination, and dancing and partying the night away.



**AB
Window Cleaning**

Tel. 01743 792261
Mob. 07983 619325
E-mail: adrian.beesty@sky.com

Windows | Conservatories | Roofs and Gutter Systems and Traditional | Gutter Cleaning
Domestic and Commercial | Free No Obligation Quotations

Carolyn Bailey Alterations

Alterations, tailoring, dressmaking
bridal and evening wear
soft furnishings
curtains and cushions altered
and made to measure

**Woodlands
Ploxgreen
Minsterley**

**01743 791972
07784 836599**

Ruby Vehicle Services Ltd



Pennerley, Shropshire

Flexible, reliable services to keep you motoring

- HGV and light commercial repair and maintenance
- Service and inspection
- Major repairs and restoration projects
- Roadside assistance and recovery
- On-site service available
- Vehicle transportation
- Technician hire
- MOT preparation and presentation

info@rubyvehicleservicesltd.com

www.rubyvehicleservicesltd.com



07960 960730

07940 577685

01743 792292



Masks to colour from
sweetlivingmagazine

Some songs that might
deceive you, but who had
hits with them

1. Lying Eyes 1975
2. Tainted Love 1964
3. Suspicious Minds 1969
4. Lying is the most fun a
girl can have with her clothes
on release date 2005
5. Misunderstanding 1980
6. please don't let me be
misunderstood 1965
7. Dazed and confused 1969
8. I can't explain 1965
9. Undercover Angel 1977
10. Who are the mystery
girls? 1974



1. Eagles
2. Soft Cell
3. Elvis
4. Panic at the disco
5. Genesis/Phil Collins
6. Animals
7. Led Zeppelin
8. The Who
9. Alan O'Day
10. New York Dolls

The Lone Ranger found Tonto, flat out by the side of the road with his ear to the ground. Thinking he was using some ancient native american trick to listen for danger, the Ranger asks "What can you hear, my friend?".

Tonto replies "Kiemosabi, there's a stage coach pulled by four horses , two black, two brown, the driver has a stetson hat and one of the passengers is a beautiful lady and the other a priest."

Astounded the Lone Ranger exclaims "Wow, you can tell all that by just listening to the vibrations in the ground."

"Not likely" groans Tonto "The ***** coach ran me over 5 minutes ago!"



Content wanted
We are always looking for
articles and stories

Local history

Family trees

Sports or hobbies

Gardening and DIY tips

Humour

Poetry

Competitions



sammy@snailbeachdistrictnews.co.uk

deadline May 21st for June issue



RESIDENTIAL, DAY STAY & RESPITE CARE

CLIFFDALE CARE HOME

Cliffdale offers comfortable home-from-home accommodation for around twenty-five residents over the age of 65 who require assistance with everyday living and personal care.

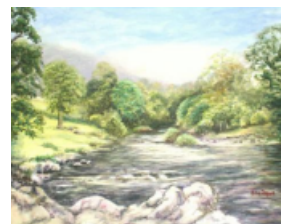
SHREWSBURY ROAD, PONTESBURY, SHROPSHIRE

SY5 0QD

TEL: 01743 790 261

Learn more at cliffdalecarehome.co.uk and
facebook @cliffdalecarehome

OPEN
NOW



Tankerville Pottery and Gallery

Excellent selection of:
**Paintings, Cards, Crystals,
Stoneware Pottery, Oven to
Tableware, Bread Cocks.**

***Super Presents at
Reasonable Prices!***

Tankerville Pottery & gallery

Pennerley, Stiperstones.

SY5 0NB

Tel: 01743 791 580

view our on-line gallery at

www.tankervillegallery.co.uk



Don't Ditch it Mick'll Fix it !

- | | |
|--------------|---------------|
| •TV's | •Videos |
| •Stereos | •Kettles |
| •Electricals | •Lamps |
| •Microwaves | •Radios |
| •CB Radio | •2 Way Radios |

*We do not repair "White Goods" (washing machines etc),
but will always look at anything else.*

- Over 30 Years Experience
- Competitive Prices
- All repairs Guaranteed
- Fully Equipped Workshop

Tel: 07516 333141

Email: michaelwanless5@gmail.com



Your Safer Neighbourhood Team are:

SGT 2382 Damien Kelly

PC 3331 Stuart Coote

PCSO 6160 Shaun Culliss

SC 39516 Amber Jones

Police contact numbers

Please note - Bishops Castle Team voicemail:

01743 264777 has now been disconnected by HQ

Emergency: 999

Non Emergency: 101

Crime stoppers: 0800 555 111

Website: www.westmercia.police.uk

Twitter: @SouthShropCops

Facebook:

Bishops Castle Policing Team Rural Watch

CRIME/INCIDENTS TO NOTE REPORTED

CHIRBURY, WORTHEN, HOPE, SHELVE & STIPERSTONES

16th March 2021 – 14th April 2021

Criminal damage Stemming from a civil boundary dispute

Churchstoke

Theft Report of 7 ewes stolen **Stapeley**

Criminal damage to a vehicle endangering life

Brake cable cut on vehicle **Hope**

ABH x 2 Assault occurred between two dog walkers

Stapeley Common

Dog dangerously out of control **Stapeley Common**

Malicious communications **Worthen**

Burglary Farm outbuildings broken into, 2 x chainsaws, a welder, welding rods, mag drill, extension cable, and 2 x angle grinders stolen. **Hope**

Key Phone Numbers

NHS Help

111

Worthen Medical

01743 891 401

Pontesbury Medical

01743 790 325

Shropshire Council

0345 678 900

Care in the Community

0121 318 5138

Citizen's Advice

0344 499 1100

Rural Support

0300 123 2825

Age Concern 01743 233

123

Samaritans (Free)

116 123

Western Power

(Power Cut) 105

Severn Trent (emergency)

0800 783 4444

British Gas

0800 111 999

Universal Credit

0800 328 5644

Child Benefit

0300 200 3100

Pensions

0800 731 0469

HMRC Covid 19 support

0800 024 1222

Care in the Community

0121 318 5138

Minsterley Motors

Telephone 01743 791208

552/553 Shrewsbury to Bishops Castle

Monday to Friday

Notes (SCH - School Days Only)												SCH				SCH			
BUS STATION, Stand N	07:35	08:10	08:50	10:05	10:25	11:00	12:00	12:30	13:30	14:00	14:35		15:45	16:25	16:25	17:00	17:40	18:10	
Cophome Rd, opp Barracks	07:42	08:17	08:57	10:12	10:32	11:07	12:07	12:37	13:37	14:07	14:42		15:52	16:32	16:32	17:07	17:47	18:17	
Shrewsbury Hospital			09:02	10:17	10:37		12:12	12:42	13:42	14:12			15:57	16:37		17:12	17:52		
Radbrook Oakfield Rd Jct	07:47	08:22				11:12					14:47				16:37			18:22	
Hanwood, Caradoc View Jct	07:52	08:27	09:07	10:22	10:42	11:17	12:17	12:47	13:47	14:17	14:52		16:02	16:42	16:42	17:17	17:57	18:27	
Hanwood, Cock Inn	07:54	08:29	09:09	10:24	10:44	11:19	12:19	12:49	13:49	14:19	14:54		16:04	16:44	16:44	17:19	17:59	18:29	
Lea Cross, adj Jct	07:57	08:32	09:12	10:27	10:47	11:22	12:22	12:52	13:52	14:22	14:57		16:07	16:47	16:47	17:22	18:02	18:32	
Mary Webb		08:38 SCH										15:20							
Pontesbury, opp Shop	08:03	08:38	09:18	10:33	10:53	11:28	12:28	12:58	13:58	14:28	15:03	15:21	16:13	16:53	16:53	17:28	18:08	18:38	
Minsterley, adj crown & sceptre	08:07	08:42	09:22	10:37	10:57	11:32	12:32	13:02	14:02	14:32	15:07	15:27	16:17	16:57	16:57	17:32	18:12	18:42	
Plox Green, Crossroads	08:09			10:39	10:59	11:34	12:34	13:04	14:04	14:34		15:29	16:19	16:59	16:59		18:14	18:44	
Snailbeach, Village Hall					11:01				14:06			15:32	16:21		17:01			18:46	
Stiperstones, adj Pub					11:05				14:10			15:35	16:25		17:05			18:50	
Hope	08:15			10:45			12:40			14:40				17:05			18:20		
Gravels	08:19			10:49			12:44			14:44				17:09			18:24		
White Grit, Jct	08:23			10:53			12:48			14:48				17:13			18:28		
Llan Turn Jct	08:27			10:57			12:52			14:52				17:17			18:32		
Lydham Glebe Meadow Jct	08:31			11:01			12:56			14:56				17:21			18:36		
Bishops Castle Salop Street jct	08:33			11:03			12:58			14:58				17:23			18:38		
Bishops Castle, adj Boars Head	08:35			11:05			13:00			15:00				17:25			18:40		

From 6th January 2020

552/553 Bishops Castle to Shrewsbury

Monday to Friday

Notes (SCH - School Days Only)			SCH		SCH													
Bishops Castle, opp Boars Head				07:30				09:40			12:20		13:30			15:40		
Bishops Castle Salop Street Jct				07:32				09:42			12:22		13:32			15:42		
Lydham Glebe Meadow Jct				07:36				09:46			12:26		13:36			15:46		
Llan Turn Jct				07:40				09:50			12:30		13:40			15:50		
White Grit, Jct				07:44				09:54			12:34		13:44			15:54		
Gravels				07:47				09:57			12:37		13:47			15:57		
Hope				07:50				10:00			12:40		13:50			16:00		
Stiperstones, opp Pub	06:50	07:20	07:50		08:23				11:15					14:35			16:50	
Snailbeach, Village Hall	06:54	07:24	07:54		08:27				11:19					14:39			16:54	
Plox Green, Crossroads	06:56	07:26	07:56	07:56	08:30			10:06	11:21	11:55	12:46	13:05	13:56	14:41		16:06	16:53	
Minsterley, opp crown & sceptre	06:58	07:28	07:58	07:58	08:33	08:50	09:25	10:08	11:23	11:57	12:48	13:07	13:58	14:43	15:10	16:08	16:58	17:35
Pontesbury, Hall Bank	07:03	07:33	08:03	08:03	08:37	08:55	09:30	10:13	11:28	12:02	12:53	13:12	14:03	14:48	15:15	16:13	17:03	17:40
Mary Webb					08:40										15:26 SCH			
Lea Cross, Opp Jct	07:08	07:38	08:08	08:08		09:00	09:35	10:18	11:33	12:07	12:58	13:17	14:08	14:53	15:30	16:18	17:08	17:45
Hanwood, Cock Inn	07:11	07:41	08:11	08:11		09:03	09:38	10:21	11:36	12:10	13:01	13:20	14:11	14:56	15:33	16:21	17:11	17:48
Hanwood, Caradoc View Jct	07:13	07:43	08:13	08:13		09:05	09:40	10:23	11:38	12:12	13:03	13:22	14:13	14:58	15:35	16:23	17:13	17:50
Radbrook Oakfield Rd Jct	07:18		08:18							12:17					15:40			
Shrewsbury Hospital		07:48		08:18		09:10	09:45	10:28	11:43		13:08	13:27	14:18	15:03		16:28	17:18	17:55
Cophome Rd, adj Barracks	07:23	07:53	08:23	08:23		09:15	09:50	10:33	11:48	12:22	13:13	13:32	14:23	15:08	15:45	16:33	17:23	18:00
Bus Station Stand N	07:30	08:00	08:30	08:30		09:22	09:57	10:40	11:55	12:29	13:20	13:39	14:30	15:15	15:52	16:40	17:30	18:07

From 6th January 2020



Saturday

08:00	08:35	10:05	10:45	12:30	13:45	14:45	15:40	17:00	17:40
08:07	08:42	10:12	10:52	12:37	13:52	14:52	15:47	17:07	17:47
08:12	08:47	10:17	10:57	12:42	13:57	14:57	15:52	17:12	17:52
08:17	08:52	10:22	11:02	12:47	14:02	15:02	15:57	17:17	17:57
08:19	08:54	10:24	11:04	12:49	14:04	15:04	15:59	17:19	17:59
08:22	08:57	10:27	11:07	12:52	14:07	15:07	16:02	17:22	18:02
08:28	09:03	10:33	11:13	12:58	14:13	15:13	16:08	17:28	18:08
08:32	09:07	10:37	11:17	13:02	14:17	15:17	16:12	17:32	18:12
08:34	09:09	10:39	11:21	13:04	14:19	15:19	16:16	17:38	18:14
	09:12				14:21			17:40	
	09:15				14:25			17:45	
08:40		10:45				15:25			18:20
08:44		10:49				15:29			18:24
08:48		10:53				15:33			18:28
08:52		10:57				15:37			18:32
08:56		11:01				15:41			18:36
08:58		11:03				15:43			18:38
09:00		11:05				15:45			18:40

Saturday

	07:30		09:30		12:15			15:50	
	07:32		09:32		12:17			15:52	
	07:36		09:36		12:21			15:56	
	07:40		09:40		12:25			16:00	
	07:44		09:44		12:29			16:04	
	07:47		09:47		12:32			16:07	
	07:50		09:50		12:35			16:10	
07:05		09:20						14:45	
07:09		09:24						14:49	
07:11	07:56	09:26	09:56	11:40	12:41	14:00	14:51	16:16	16:55
07:13	07:58	09:28	09:58	11:42	12:43	14:02	14:53	16:18	16:57
07:18	08:03	09:33	10:03	11:47	12:48	14:07	14:58	16:23	17:02
07:23	08:08	09:38	10:08	11:52	12:53	14:12	15:03	16:28	17:07
07:26	08:11	09:41	10:11	11:55	12:56	14:15	15:06	16:31	17:10
07:28	08:13	09:43	10:13	11:57	12:58	14:17	15:08	16:33	17:12
07:33	08:18	09:48	10:18	12:02	13:03	14:22	15:13	16:38	17:17
07:38	08:23	09:53	10:23	12:07	13:08	14:27	15:18	16:43	17:22
07:45	08:30	10:00	10:30	12:14	13:15	14:34	15:25	16:50	17:29

745 Mondays and Fridays only

Pontesbury to Clun 745 A	
Pontesbury Shop	08:50
Minsterley	08:55
Hope	09:00
Gravels	09:03
White Grit	09:05
Lyddham	09:10
Bishops Castle	09:15
Colebatch	09:20
Clun	09:30
Clun to Ludlow 745 B	
Clun	09:35
Clunton	09:38
Little Brampton	09:40
Lydbury North	09:50
Aston on Clun	10:03
Long Meadowend	10:05
Craven Arms	10:10
Ludlow Assembly Rooms	10:25
Ludlow to Clun 745 B	
Ludlow Assembly Rooms	13:15
Craven Arms	13:30
Long Meadowend	13:35
Aston on Clun	13:37
Lydbury North	13:50
Little Brampton	14:00
Clunton	14:02
Clun	14:05
Clun to Pontesbury 745 A	
Clun	14:10
Colebatch	14:20
Bishops Castle	14:25
Lyddham	14:30
White Grit	14:35
Gravels	14:37
Hope	14:40
Minsterley	14:45
Pontesbury	14:50

Does not run on Bank Holiday except Good Friday

775 Tuesdays only

Pontesbury to Bishops Castle 775 A	
Pontesbury Shop	09:30
Minsterley	09:35
Plox Green	09:38
Hope	09:40
Gravels	09:45
White Grit	09:48
Llan Turn	09:51
Bromleys Mill	09:55
Lyddham	09:57
Bishops Castle	10:00
Bishops Castle to Newtown 775 B	
Bishops Castle	10:05
Church Stoke	10:20
Blue Bell	10:25
Sarn	10:30
Kerry	10:40
Newtown	10:50
Newtown to Bishops Castle 775 B	
Newtown	13:50
Kerry	14:00
Sarn	14:10
Blue Bell	14:15
Church Stoke	14:20
Bishops Castle	14:35
Bishops Castle to Pontesbury 775 A	
Bishops Castle	14:40
Lyddham	14:43
Bromleys Mill	14:45
Llan Turn	14:49
White Grit	14:52
Gravels	14:55
Hope	15:00
Plox Green	15:02
Minsterley	15:05
Pontesbury	15:10

Temporary Post Office
Stiperstones Inn
12.15 to 2.15
Tuesdays only



CHEYENNE TOURS WITH LONGMYND COACHES - DAY TRIPS & TOURS 2021 with ANNE PREECE

DATE	DESTINATION	PRICE
Thu 24th June	Slimbridge Wildfowl Centre - Explore these wetlands paradise (Food, drinks & Gifts available)	£20 Coach only
Wed 30th June	Llandudno - Stroll along the seafront to the Victorian Pier, a classic seaside town.	£22
Sat 3rd July	Lytham St Annes - On the Fylde Coast, walk around the lake and gardens	£25
Tue 6th July	Trentham Gardens /Centre/Shopping Village - Plenty to see and do and brouse round the shops.	£18
Thu 15th July	Bodnant Botanical Gardens (N.T) - Set in Tal-y-cafn, near Colwyn Bay, Wales	£23 Coach only
Sat 17th July	Llandudno - A classic sea-side resort	£22
Wed 21st July	Visit Hereford & Market and 'Chase' Gin Distillery - a guide will give a tour and explain their award winning gin & vodka	£39 Plus tastings
Fri 23rd July	Southport - Largest Victorian Sea-side in Merseyside	£25
Tue 3rd August	Llandudno - Visit the 'Great Orme' or just relax on the promenade (Pick up from Bridgnorth, Much Wenlock & Shrewsbury)	£22
Thu 5th August	Llandudno (Pick up Shrewsbury only)	£20
Sun 8th August	West Midlands Safari Park - Treat for the Family	TBC
Fri 13th August	Weston - Super - Mare, Set in Somerset with a two mile Sea front and promenade.	£25
Wed 25th August	Aberystwyth - A University sea-side town with over a 'mile long' promenade.	£22
Tue 31st August	Moreton - in-the-Marsh / Bourton-on-the-Water - Lovely Cotswold Village straddling the River Rush.	£20
Wed 15th Sept	Cardiff & Cardiff Bay - Capital City of Wales, home to Cardiff castle and the National Museum.	£25
Sat 18th Sep	Weston - Super - Mare	£25
Wed 29th Sep	Bury Market - Famous Lancashire Market	£25
Wed 13th Oct	Trafford Centre - A large shopping mall with favourite high Street names and leisure complex.	£20
Sun 24th Oct	Chester & Cheshire Oaks - Historic City / Large Designer Outlet.	£19
Wed 27th Oct	Blackpool Illuminations - Breath of sea air/ Ride on a tram (No tour through lights due to traffic)	£25
Sat 6th Nov	Chatsworth Christmas Market / House.	£22 Coach only
Wed 10th Nov	National Arboretum, Alrewas - 150 acres of old gravel workings / centre of 'Remembrance' all year round.	£20
Thu 18th Nov	Mystery Trip - Where will we go and end up?	£20
Thu 2nd Dec	Worcester Christmas Market - Find that special gift, try the mulled wine!	£22 Includes parking
Thu 16th Dec	Christmas Meal - Celebrate Christmas with friends & family.	£19

07966459806 or 01746 787237.
 annepreece@icloud.com
 or
 Val at Longmynd Travel
 01743 861999