

# SNAILBEACH DISTRICT NEWS

April 2022

Free

## The Curlews Return



Headstarted juvenile Curlew, photo by A. Bicheno, [www.curlewcountry.org](http://www.curlewcountry.org)

Spring is on its way and Curlews are returning to the Curlew Country area. After concern that recent storms might affect return migration, reported sightings of the first Curlews of the season only a little later than usual have been welcomed with a sigh of relief by Curlew Country staff. Curlews are Britain's largest wader, a migratory species facing sharp declines due to mounting environmental pressures and ever-growing predator levels. Britain holds around 25% of the world population of the breeding Eurasian Curlew, and since 2017 Curlew Country has been dedicated to saving this important species from local extinction.

2022 sees Curlew Country set to continue its Curlew Recovery work through another season in Shropshire and the Welsh borders, resuming its efforts to try and reverse their decline. Farmer support and predator control are vital to saving Curlews and offer benefits to many other species as well. Whilst waiting for larger policy changes and new environmental land management schemes, Curlew Country has been headstarting to try and prevent the local population disappearing.



*Check inside  
for more on  
the project  
and how you  
can help.*



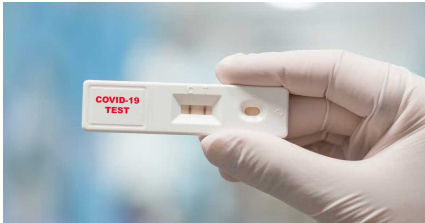
### Editor's Notes

Two stripes on my test kit but I'm still rolling along. I have coughed and sneezed

for three days with negative tests but this morning those parallel lines appeared. I have been isolating in the campervan since Monday, just venturing out for a bit of weeding. It seems that this three or four day delay between symptoms appearing and a positive test showing has become the norm. I am not sure at what time in this cycle I became infectious.

Plenty of time to put this edition together but I seem to be making heavy weather of it.

Lots of optimistic content centering around environmental and re-wilding projects with some trivia on bird species doing well and not so well.



We would like to thank all our friends and family, who came to join us, to celebrate our Diamond Wedding Anniversary, on Saturday 12th March.

We can't give enough praise to our caterers, Lara & Phil, they gave us advice at the planning stage, and they prepared and served an outstanding quality, quantity and variety of food. They also helped the proceedings to run smoothly -nobody could have done better. How lucky we are to have people like this in our district.

The donations for Hope House amounted to £325

Clifford & Sandra Evans

Carol, Adrian, Duncan & family would like to say thank you for all the kind messages, phone calls and flowers received whilst Joyce (Bennett) was in Hospital and later sadly passed away after a very short illness.

The attendance at the Funeral was overwhelming and donations totalled to £890 which was divided between Severn Hospice at Home and Rea Valley Methodist Churches (for the upkeep of Snailbeach Methodist Church Graveyard).

*We hope everyone is enjoying the golden display in Stiperstones. We also hope you noticed the few snowdrops that were planted last year which are starting to take hold.*

*If you have a few snowdrops to spare, now is the time to transplant a clump amidst the daffs to add variation to our spring display. Find a gap and drop your snowdrops in.*

*Next autumn, we intend to add crocuses and will buy some bulbs and have some 'planting days' like we did back in autumn 2019. (What a lot has happened since those carefree days!???)*

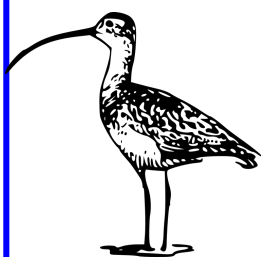
*If you would like to donate to this next phase, please drop a cash donation into the box outside John's Shop or into Tim Hockly's letterbox - marked Stiperstones Flowers.*

*Thanks for being part of something remarkable!  
Tim Hockly and Sal Tonge*



From the front page

**Headstarting**, taking eggs from wild nests under licence and incubating them artificially, is a temporary measure to help boost a population. The resulting chicks are then reared in captivity until they are able to fly strongly, at which point they are released back into the wild giving them a better chance of survival. Since starting this valuable work Curlew Country have released over 90 fully fledged Curlew chicks, and preparations are already underway to make 2022 another successful headstarting year.



Thursday 21st  
April 2022  
**Curlew Country  
Circuit**

Join a 13 mile  
fundraising walk, with  
a shorter route for

families, taking in beautiful  
Shropshire Hills scenery and Curlew  
hotspots. Learn more about these  
fantastic birds and raise funds to help  
Curlew Country secure their future by  
continuing their vital Curlew recovery  
work. To find out more and book your  
place visit [www.curlewcountry.org](http://www.curlewcountry.org)

## Wildlife Events with Natural England

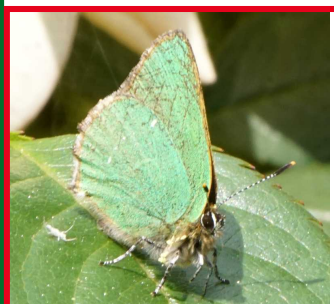
Sunday 8th May – Dawn chorus  
walk at 5.30am followed by  
optional breakfast at the  
Stiperstones Inn. £7.50 plus  
breakfast.

Saturday 14th May – Birds of the  
Stiperstones walk with the Upper  
Onny Wildlife Group. Free.

Wednesday 25th May – Evening  
wildlife walk at 7pm with Dave  
Pearce. £7.50.

For more details email:  
[Stiperstones.events@naturalengland.org.uk](mailto:Stiperstones.events@naturalengland.org.uk) or follow  
our Facebook page.

## Butterfly and Moth Festival



There are  
many events  
to join if  
butterflies and  
moths are your  
thing,  
including a talk  
on 7th April in  
Bishops Castle.

Find full details here  
[foundationforcommonland.org.uk/news](http://foundationforcommonland.org.uk/news)

## WHAT'S ON

Fit after forty with Sal

Weekly fit club

Outdoors

All abilities

Cardio, strength and flexibility

Stiperstones School Playground

Sundays at 9

£7 for an hour

Enquiries Tel 07891 676623

Village Hall  
Table Tennis  
Fridays 1.30pm

contact : [snailbeachtt@gmail.com](mailto:snailbeachtt@gmail.com)





**Simplifying Computers  
and Technology  
across Shropshire**



- Computer Repairs & Upgrades
- No fix, no fee
- Cloud Storage
- Data Recovery
- Internet / WiFi problems fixed
- Backup Service – 3 copies of your data is crucial
- Business Support
- Website and Email Hosting
- Local Office in Pontesbury
- Smart Phones, Smart Speakers, Tablets, Laptops, Desktops, TVs, Security Cameras
- We sell 3 grades of Electronics – “New”, “Open Box” or “2<sup>nd</sup> User”, min 1yr warranty
- Optional installation
- Check our website for stock
- One to one & group Tuition

**☎ 01743 790968**

**📞 07971 480036**

**✉ greg@shroptech.com**

Shropshire Technology Ltd. is registered with the ICO for GDPR – your data is safe with us

The wren is a tiny brown bird, although it is heavier and not as slim as the even smaller goldcrest. It is dumpy, almost rounded, with a fine bill, quite long legs and toes, very short round wings and a short, narrow tail which is sometimes cocked up vertically. For such a small bird it has a remarkably loud voice. It is the most common UK breeding bird, although it suffers declines during prolonged, severely cold winters.

What they eat: Insects and spiders.



- Electrical Installation
- Fault Finding & Repairs
- Consumer Unit Changes/Upgrades
- Inspection & Testing of all Electrical Installations
- EV Charge Point Installation
- Verification & Testing of 3<sup>rd</sup> Party Installations
- Building Control notification as required

# C F ELECTRICAL

**Domestic, Commercial, Industrial**

Fully approved & insured

DBS & CRB cleared electrician

Contact me for a free no obligation quote

No job is too small.

Contact: Carl Fleming

Tel: 07482 088298

Email: [info@cfelec.co.uk](mailto:info@cfelec.co.uk)



## The birds in Our Garden

Many of us take part in the bird counts promoted by the RSPB each year. Throughout the next pages you will find some facts about those birds doing well and those not so well.

It was estimated that there were 83 million pairs of native breeding birds in the UK in 2016. The most numerous species in the UK remains the wren, with 11 million breeding pairs. This species has seen the largest increase in numbers since monitoring began, with 6.5 million more pairs now compared to fifty years ago. The 12 native species with over two million pairs make up 60% of all the UK's breeding birds, totalling 50 million pairs. (number in brackets million pairs)



Wren (11)	Blue tit (3.4)
Robin (7.3)	Dunnock (2.5)
House sparrow (5.3)	Meadow pipit (2.5)
Woodpigeon (5.2)	Great tit (2.4)
Blackbird (5)	Pheasant (2.4)
Chaffinch (5)	Willow warbler (2.3)

### Defibrillator boxes

Last year, it was highly distressing to witness two family members of a person who had suffered a heart attack trying to access the defibrillator in the box at The Bog Visitor Centre. There wasn't one; it was empty.

They were directed to the Stiperstones Inn, where the instructions are to phone 999 and give the box number to receive a code to open it, but there was no box number visible.

Apparently the number is underneath the box, but who would look there?



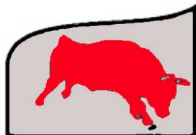
The number was taped to the front of the box after this problem was queried, but the tape has since disappeared, making the locked box useless in an emergency.

The defibrillator boxes in the Chirbury and Worthen area are not locked, they are checked regularly by local volunteers and batteries re-charged or replaced as necessary. Obviously this has a cost, but surely it is not beyond the capacity of people in our area to raise funds for maintenance and to check the boxes are functional?

We live 25 mins. away from the Royal Shrewsbury Hospital and given the unlikely possibility an ambulance would arrive in time to save a person's life, we need defibrillators that are accessible and working. The current situation creates a false sense of security. Boxes that are locked or empty are no use to anyone.

If anyone is willing to join me in trying to resolve this situation, please contact me.

Alyson Small 01743 791476



**Smiths Butchers Minsterley**

**01743 791863**

Smiths Butchers: Holly House, Minsterley. SY5 0BA.

**We sell: Local & Exotic Meat, Game, Pies, Fruit, Veg, Cakes, Bread, Milk, Cheese, Tinned Goods, Cereals, Tea, Coffee, Sugar, Biscuits, Crackers, Crisps, Sauces, Jams & Pickles.**

**You can find us just over the Bridge in Minsterley and opposite the church.**

**Smiths can always be relied on to supply the best British bred meats at competitive prices.**

**We have weekly special offers with a range of great value freezer packs.**

**- and our pies are something special!**

**01743 791863**



**HAND MADE  
GARDEN FURNITURE  
FROM  
RECYCLED TIMBER**

**CHAIRS, COFFEE TABLES  
BENCH SEATS etc.**

E-mail: [servatory@hotmail.com](mailto:servatory@hotmail.com)

Or call Graham on 01743 790 115  
WHEEL BARROW PLANTERS FROM £10

The UK's favourite bird - the robin with its bright red breast is familiar throughout the year and especially at Christmas! Males and females look identical, and young birds have no red breast and are spotted with golden brown. Robins sing nearly all year round and despite their cute appearance, they are aggressively territorial and are quick to drive away intruders. They will sing at night next to street lights.

What they eat:

Worms, seeds, fruits, insects and other invertebrates.



## **NORMAN JONES**

### **DOMESTIC APPLIANCES**

**REPAIRS TO  
COOKERS, WASHERS  
& DRYERS**

**Same Day/Next day  
service where possible  
All Work Guaranteed**



**NEW & USED SALES  
Washers**

**Bosch normally available  
Delivered & installed to  
working taps, etc.  
Old Appliance Removed**



**Please ring  
PETE: 07971 252069  
Norman: 07816 875233  
Home/Ansa: 01588 638677**

## **T P Hockly**

### **Building Contractor**

**Timber Framed Buildings & Extensions  
Brickwork and Plastering  
Driveways, General Building Work  
& Building Maintenance  
call Tim on 01743 791114  
Mobile 07814 498 524**

**RESPONSIBLE DISPOSAL AND  
REMOVAL OF UNWANTED BEE AND  
WASP NESTS**

**Reasonable Rates**



**Call Tim Hockly 07814 498524**



## Memories of a Sunday morning.

from Susan Sproson

Early this morning I was cleaning my shoes before a hospital visit and my mind went back to Sunday mornings 70 years ago. Sundays were completely different then; no TV no car. Days out were limited to annual Sunday School trips, but usually on Sundays we went to chapel and shared meal times with relatives. So on Sunday morning Mum would be organising clothes and getting breakfast and Dad would clean our shoes.

During the week we would walk to school back and forth across the fields at 'Potters the Wood', through the kissing gates and down to Minsterley. It was about one and a half miles of muddy paths. When we came home we played on muddy lanes and on the White Hillocks. I doubt we would have had more than one pair of shoes – we probably had wellies I am sure and sometimes played in those. They might have been better for walking to school but I don't recall carrying shoes.

Anyway by Sunday our shoes would be in a sore state. Sunday clothes were different; made by Mum for the Sunday School Anniversary and worn as best clothes until the next one. Shoes were more expensive and could not be made at home, so they were worn until they were useless, but they still had to be polished so they didn't look so obviously worn.

Dad had a box with Black Cherry Blossom and Brown Cherry Blossom polish and labelled brushes that looked ancient, but the important item was a velvet pad filled with something soft and kept only for shining shoes.

Dad would stand in the back kitchen to clean everyone's shoes. The polish was applied and left for a while then a softer brush was used to create a shine and finally he would pick up the pad to burnish the shoes to a bright sheen. I don't remember spit and polish (Dad was never in the army) but I do remember that by the time we were ready our shoes were clean and shiny and also ready to do battle for another week.



### **A must for your diary**

- A local and long overdue get together picnic to celebrate the Platinum Jubilee
- At Snailbeach Village Hall playing field
- Live music and entertainment
- Bring your own picnics and folding chairs/blankets
- Tea/coffee and ice creams available in the hall
- Fancy dress optional
- Prizes for the best crown in U11, 11-18 and adult categories
- Free Jubilee memento for children



**Platinum  
Jubilee  
Thursday  
June 2nd  
Village  
Garden  
Party**





# METAL RECYCLING



## RECYCLE YOUR OLD SCRAP METAL

WASHING MACHINES, COOKERS, CARS, VANS, CAST,  
BRASS, COPPER, LEAD, BATTERIES, CABLE, FARM  
SCRAP, OLD CENTRAL HEATING SYSTEMS, ETC.

**NO LOAD TOO BIG OR TOO SMALL  
FREE COLLECTION!**

**CALL - 07989 050 276  
OR - 01743 791 493**

## Feel Good Feet

Foot Health Practitioner

**Julie Foster**

DipFH MCFHP MAFHP

Mobile foot treatments in the comfort of your own home

To book an appointment call

**07772 086846**

Routine home foot care visits include:

Toenail trimming - Ingrown toenail

Thickened nails - Fungal infections

Lacuna - Corn removal - Callus reduction

Cracked heels and fissures - Diabetic foot care

Verrucae - Pedisafe nail reconstruction

Warm wax therapy treatment

Manicure - Pedicure - Gel nail polish

*Fully insured and DBS checked.*

*Registered with the British association of foot health professionals*



MEMBER OF  
THE SPAE INSTITUTE

Sparrows are noisy and gregarious, these cheerful exploiters of man's rubbish and wastefulness have managed to colonise most of the world. The ultimate avian opportunist perhaps. Monitoring suggests a severe decline in the UK house sparrow population, recently estimated as dropping by 71 per cent between 1977 and 2008 with substantial declines in both rural and urban populations. While the decline in England continues, Breeding Bird Survey data indicate recent population increases in Scotland, Wales and Northern Ireland. What they eat: Seeds and scraps.



RESIDENTIAL, DAY STAY & RESPITE CARE

## CLIFFDALE CARE HOME

Cliffdale offers comfortable home-from-home accommodation for around twenty-five residents over the age of 65 who require assistance with everyday living and personal care.

SHREWSBURY ROAD, PONTESBURY, SHROPSHIRE

SY5 0QD

TEL: 01743 790 261

Learn more at [cliffdalecarehome.co.uk](http://cliffdalecarehome.co.uk) and  
facebook @cliffdalecarehome

**PHIL GRIFFITHS**

Local Plumber



Tap Replacement and Plumbing  
Repairs Undertaken

New Taps Supplied and Fitted  
Home Choose Service

Established 35 years

Prompt and Professional  
Pontesbury based



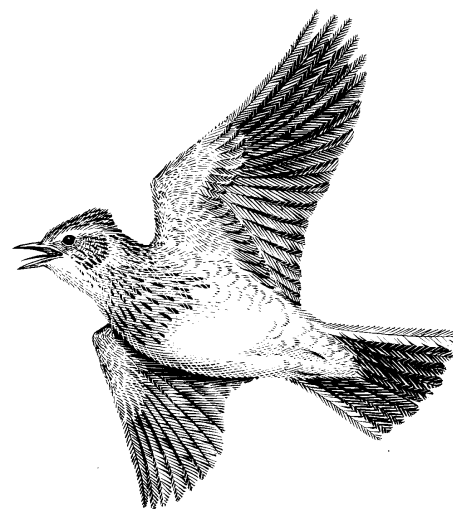
**Tel 01743 790046**

**Mobile 07970 010148**

It's always nice to write the first spring addition of Notes from the Hill, heralding the awakening of the hill's wildlife after the winter. The first curlews are back, and I can only assume that it was one of the chicks reared by Curlew Country that dropped in the other day next to the office, as it arrived back calling to the exact location where the rearing pens were placed last year. Curlew Country are holding a sponsored walk across the Stiperstones on the 21st April to help raise funds for their work, see [www.curlewcountry.org](http://www.curlewcountry.org) for more information.

The nesting birds are returning to the hill to set up their territories and that starts off our bird survey work. Bird surveys rely upon the territorial behaviour of birds at this time of year, particularly the males who announce their territorial rights by singing their hearts out. Us humans consider this delightful and write poems about the lovely song of the skylark or odes to nightingales, "blithe spirits...with unbodied joy". However, in reality, these birds are shouting warnings to others of their kind to stay away, or else!

Once the birds have found suitable nesting habitat, like the heathland of the nature reserve, they will mark out an area in which they can find enough food to bring up a family of hungry chicks. This will often be done by finding suitable perches from which to sing from, for example the stonechat will find suitable vantage points on gorse bushes and small trees. However, some birds like meadow pipits and skylarks, that nest where there are no song perches, will find suitable spots from which to launch their aerial song flight. Skylarks usually sing on their way up and then hover for ages above their chosen spot, while meadow pipits fly directly upwards and then sing while parachuting slowly back to the ground.



Other birds that will be nesting on the ground include red grouse, snipe and possibly curlew, while reed buntings, whitethroats, tree pipits, stonechat and whinchat will all nest, if not on the ground, close to it.

Birds that nest on the ground are extremely easily disturbed by dogs running loose, so when visiting the nature reserve please keep dogs on a lead and on the path. Once a bird is flushed off a nest its eggs or young chicks will often be targeted by predators such as crows, and even if not, if it is constantly disturbed it will usually abandon the nest. So, although the hill has open access, the best way for you to help the wildlife of the hill, is to keep to the public rights of way and ensure that your dog does too.

If you would like to learn more about the birds of the Stiperstones we are running a number of events this year: See the Hat's On (page 3)

Simon Cooter for Natural England staff at Rigmoroak.

## VPJ Electrics & Property Services

For all your domestic electrical installation and property maintenance

Contact Paul Jones  
Tel: 07976 909 434  
Email: vpjones40@gmail.com

*"No job too small"*  
**Free estimates**

**MARK'S DECORATING SERVICES**  
**PAINTER & DECORATOR**  
**SNAILBEACH & SURROUNDING AREAS**  
**07707 515968**  
CORNALL214@BTINTERNET.COM

## Carolyn Bailey Alterations

Alterations, tailoring, dressmaking  
bridal and evening wear  
soft furnishings  
curtains and cushions altered  
and made to measure

Woodlands  
Ploxgreen  
Minsterley  
01743 791972  
07784 836599



**AB**  
**Window Cleaning**  
Tel. 01743 792261  
Mob. 07983 619325  
E-mail: adrian.beesty@sky.com

Windows | Conservatories | Reach and Wash System and Traditional  
Gutter Cleaning | Domestic and Commercial | Free No obligation Quotes

The UK's largest and commonest pigeon, the woodpigeon is largely grey with a white neck patch and white wing patches, clearly visible in flight.

Although shy in the countryside it can be tame and approachable in towns and cities. Its cooing call is a familiar sound in woodlands as is the loud clatter of its wings when it flies away.

What they eat:

Crops like cabbages, sprouts, peas and grain. Also buds, shoots, seeds, nuts and berries.



## Nipstone Campsite

The Bog SY5 0NJ

Tel: 01743 792073

Email: timrm@mail.com

Small friendly site for tents,  
located 200m off the Shropshire Way

1. Campfires allowed, bring your own wood.
2. No bins on site. Please take your rubbish home.
3. £6 per person per night. Under 4's free.
4. COVID. Sanitiser spray in all facilities
5. Freshly roasted coffee machine on site.



**ELECTRICAL**  
**WERLEE**  
SOLUTIONS  
Electrical contractors

**PETER LEE**

Mob 07727 610626

www.werlee.co.uk | peter.lee@werlee.co.uk

Brookside Cottage, Crows Nest Dingle,  
Snailbeach, Shropshire, SY5 0LU



## Harry Coyle

**Landscaping**

*Lawns, Hedges, Hardscaping, Decking,*

*Slabs & Fencing*

hcoyle@live.co.uk

Mob1. 0748 4 205 925

Mob2. 07866 007 428

## HOPE VALLEY RADIO

01743 791 379

07811 449 039

\*\*\*www.hopevalleyradio.co.uk\*\*\*

**TWO WAY RADIO SALES & HIRE**

TV AERIALS  
SATELLITE DISHES  
REPAIRS\*SUPPLIED AND INSTALLED\*





**Funding for farmers and landowners in the Shropshire Hills Area of Outstanding Natural Beauty.**



Launched last summer, the Farming in Protected Landscapes programme has so far awarded £176,529 to 14 projects in the Shropshire Hills AONB. The grants support one-off farming projects which deliver benefits to nature, climate, people and place.

The Shropshire Hills AONB Partnership is providing support and administering the programme locally. As we approach the second year of this 3-year funding programme, we are encouraging farmers and landowners in the Shropshire Hills to take a fresh look at the land they own or manage.

Are there areas that are difficult or expensive to farm? Could these spaces be better managed for wildlife? Are there areas suitable for 'slow the flow' measures which help with natural flood management? Could repairs help to conserve an historic site or monument, or are there opportunities to interpret a site of interest and/or encourage appropriate public access?

We would love to see this funding used to deliver large nature, climate or access projects across a number of farms, and we are encouraging farmers and landowners to think beyond their boundaries. Example projects might be to work to restore an area of upland peatland and manage it extensively with cattle, or habitat creation and management for a specific threatened species. Looking at your land in a different way can be a daunting task. A good starting point is to make sure you know what you already have in terms of good and potential wildlife habitat, historic monuments, or what public rights of way or watercourses cross your land? We can help with this, or you can access the information yourself on MAGIC maps, an online mapping tool, which highlights priority habitats, Sites of Special Scientific Interest (SSSIs), historic monuments etc

We will be holding a webinar in April to update farmers, landowners and land agents on the funding programme and answer questions - for more information on this please get in touch by emailing [shropshirehillsaonb@shropshire.gov.uk](mailto:shropshirehillsaonb@shropshire.gov.uk).

There is also lots of information about the funding programme on our website, including summaries of the projects which have been supported to date, see <https://www.shropshirehillsaonb.co.uk/help-to-look-after/farming-in-protected-landscapes>

## When could equity release be right for you?

A lifetime mortgage could help fill the gap in your finances, allowing the comfortable retirement you deserve.

- ✓ No monthly repayments
- ✓ Tax-free cash lump sum
- ✓ Holiday of a lifetime
- ✓ Remain in your own home



For a free qualified and impartial initial conversation contact us on

**07974 250389**

or [enquiries@allkindsofmortgages.co.uk](mailto:enquiries@allkindsofmortgages.co.uk)  
[linkedin.com/in/allkindsofmortgages/](https://www.linkedin.com/in/allkindsofmortgages/)



Pauline Johnson, trading as All Kinds of Mortgages, is an appointed representative of The Right Mortgage Limited, which is authorised and regulated by the Financial Conduct Authority.

This is a lifetime mortgage. To understand the features and risks, please ask for a personalised illustration. Check that this mortgage will meet your needs if you want to move or sell your home or you want your family to inherit it. If you are in any doubt, seek independent advice. Our typical advice fee would be £995 payable on completion. A lifetime mortgage may impact your entitlement to means-tested benefits and in the inheritance you may leave.

FCA number: 403640

The male blackbirds live up to their name but, confusingly, females are brown often with spots and streaks on their breasts. The bright orange-yellow beak and eye-ring make adult male blackbirds one of the most striking garden birds. One of the most common UK birds, its mellow song is also a favourite.

What they eat:

Blackbird food consists of a variety of insects and worms, but they also eat berries and fruit when in season



# Anne Whysall

## FLORISTS

Fresh flowers, plants and a large range of giftware items

*Anne Whysall Florists are based in our Studio Unit in Annscroft, Shrewsbury. We offer a local same day delivery service, for orders placed before 10am. We are also able to offer both national and international delivery through our relay partners. We are members of the British Florist Association and have been accepted into the prestigious Good Florist Guide.*

*You can order flowers via our website, following a few easy steps or you can call our studio on*

**01743 792333.**

[www.annewhysall.co.uk](http://www.annewhysall.co.uk)

Since the full-scale invasion of Ukraine by Russia on 24th February (having previously invaded in 2014), it has been uplifting to see people around the world uniting to do whatever they can to help those affected by the conflict.

The UK is a particularly charitable country, and people in Shropshire always go above and beyond when it comes to helping those in need. We saw this in spades during the covid pandemic, where community groups and friendly neighbours helped each other cope. This was especially important for those of us who had to shield, or were not able to get out for basic supplies and prescriptions.

There is also always a strong response from local communities whenever disaster appeals are organised through the major charities, which are so active in Shropshire. But the reality of renewed war in Europe following the devastation wreaked on the innocent people of Ukraine by the monster that is President Putin and his Russian war machine, has awakened a tremendous public spirit to try to help.

Most of us thought war in Europe had been consigned to history. Hardly anyone under the age of 75 has had experience of war in Europe, aside from those who served or supported people in the Balkan conflicts, and following the fall of the Berlin Wall at the end of the Cold War we did not expect nations would invade democratic neighbours in Europe.

I have been deeply moved by the outpouring of warmth and desire to help people in Ukraine and refugees escaping from the horror. Many of our communities have held fund raising events, have donated money, medicine, food, and many others have collected clothing and other consumables, which are waiting for the all-clear where to send them. At the time of writing, the Disasters Emergency Committee appeal in response to the crisis in Ukraine has helped raise over £150m, of which the government is providing £25m of match funding as part of its £400m assistance to Ukraine.

The displacement of people from their homes has been horrific to see, made all the worse by President Putin's decision to use indiscriminate destruction in Ukrainian cities, with innocent civilians paying the price.

Since the first days of this renewed conflict (it is important not to forget Russian aggression in Ukraine has been going on since 2014) I have called on the government to introduce a flexible approach to refugees, and to provide support to neighbouring countries, as the first point to which refugees will seek to flee.

Many constituents have offered to provide accommodation for refugees and their families, and I am pleased the government has put in place a specific Homes for Ukrainians Scheme, to allow anyone who can provide assistance to do so if they wish. I joined 100,000 others within the first day of the scheme opening to sign up to provide sponsorship. People arriving under this scheme will be able to live and work in the UK for up to three years, and will be able to access healthcare, benefits, employment support, education, and English language tuition.

The dire situation in Ukraine shows no sign of abating soon. I was in the House of Commons chamber last month when President Zelensky became the first non-Parliamentarian ever to give an address to the House of Commons. It was most moving. All MPs, Peers and journalists present stood united across party lines to show our support to him and the people of Ukraine in what they are going through to withstand this barbaric assault.

I stand foursquare behind the people and legitimate government of Ukraine, and the government has my full support for measures to ensure Putin fails in his policy of violent suppression of Ukraine.





A Local Personal,  
Bespoke Service

[woodmattersltd.co.uk](http://woodmattersltd.co.uk)

Tree Maintenance  
Hedge Trimming  
Woodland Management  
Planting Solutions  
Traditional Hedgelaying

01743 891231 or 07974 300328

Seasoned Logs for Sale

## Iyengar Yoga



## YOGA CLASS

### Snailbeach Village Hall

**Tuesdays 7.00 - 8.30 p.m.**

Suitable for all levels

For details contact:-

**Liz on 01743 790698**

Email: [elizabethknowles1@googlemail.com](mailto:elizabethknowles1@googlemail.com)

The thrush used to be a familiar and popular garden songbird whose numbers have declined markedly on farmland and in towns and cities. It's smaller and browner than a mistle thrush with smaller spotting. Its habit of repeating song phrases distinguish it from singing blackbirds. It likes to eat snails which it breaks into by smashing them against a stone with a flick of the head.

What they eat:

Worms, snails and fruit.



## Crowning Glory



*Val welcomes old customers and new,*  
Fully qualified in all aspects of hairdressing

**Opening hours,**

**Tuesday - Friday 9.00am - 5pm**

**Saturday 9.00am - 1pm**

**Telephone 07768402491**

**for an appointment.**

**Bennett's Business Centre, Main Rd.**

**Pontesbury**

**Join Val on Facebook**

**@CrowningGloryPontesbury**

## Ben Morris

**JIB Approved Electrician**



Call 07966 788791

Quotations 01743 792013

[www.benmorriselectrical.co.uk](http://www.benmorriselectrical.co.uk)

Efficient friendly service from an  
experienced Electrician

- Specialist in House Rewiring
- Inspection and Testing of Properties
- Extra Sockets & Lights installed
- No job too small
- We will fit your own newly purchased lights etc.
- All work VAT free
- Fully Insured
- All work certified and notified to building control
- Free Quotations
- Competitive Hourly Rates

16 March 2022

\*\*\*\*\* NEWS RELEASE \*\*\*\*\*

## A new way to walk the Stiperstones!

A world of stories is to be invisibly scattered at your feet at one of Shropshire's most celebrated beauty spots.

Funded by an Economic Recovery Grant from

Shropshire Council, 'Story Cache' is the brain child of Stiperstones Inn's landlord and landlady Phil and Lara Sproson-Jones. It is a Smart Phone app which synchs with cutting edge GPS technology and will add another element of enjoyment for visitors to this iconic landscape.

Walkers, explorers and bimbles can purchase this app from their usual app source, pull on their boots and set out along their favourite paths. As if by magic, at specific GPS locations, their phone will tell stories!

Local professional storyteller, Sal Tonge developed and recorded the story content which has 29 hidden locations along the Stiperstones ridge from the Hollies above Snailbeach to Nipstone at the extreme south of the legendary rocky outcrop. 'Of course, I've retold the much loved local myths and legends,' she explained, 'I have also added in some tales from other cultures to help you navigate the mud, take your mind off the climbs, settle into some of the folklore around the flora and fauna hereabouts! It's a real mixed bag of yarns,' she laughed.

'We wanted to help visitors get even more out of their time on our beloved hills,' said Lara, 'I've devised a couple of guided walks, with illustrations and full instructions to help those less experienced walkers. The built in map function on the app will be your guide to encourage you to explore the landscape a little and find the hidden story gems along the way!'

Strewn with stunning photography from Philip Sproson-Jones; the app can also be enjoyed from your arm chair and by those less able. It has transcripts for deaf and hearing impaired walkers too. 'We hope there is something for everyone to enjoy this special place!' said Phil.

The app will cost a one-off fee of less than £2 and can be downloaded to your phone from the end of March from your usual app source.

\*\*\*\*\*

For more information, interviews, images or a free trial access code, please reply to [saltonge@outlook.com](mailto:saltonge@outlook.com)  
Like on Facebook for updates!



Regulars to our table this winter have been the tits (Tom and his mates great, coal and long tailed) and Walter (pigeon) with his current ladyfriend. The two robins were fighting in January but by March mating fever seems to have soothed their savage breasts. We had a jay with a damaged wing who managed to keep clear of the cats for a few weeks but sadly drowned in the new pond. The nuthatch, goldfinches and the woodpecker were rare customers, so I think the mild weather allowed for plenty of foraging on the hill.



# All Shropshire Mobility

*Freedom For Living!*

vehicle adaptation specialists

hand controls  
left foot accelerators  
car boot hoists  
person hoists  
swivel seats  
secondary control  
systems ...and more!

Unit 11  
Malehurst Industrial Estate  
Minsterley, Shropshire  
SY5 0EQ



[info@allshropshiremobility.co.uk](mailto:info@allshropshiremobility.co.uk)

*Offering a bespoke service to both  
Motability and private customers*

**Tel: 01743 790 879**

# Pontesbury GARAGE Services Ltd

COMPLETE SERVICE AND REPAIR CENTRE

- ⚙ All vehicle repairs
- ⚙ Servicing - all makes and models
- ⚙ Tyres - Clutches - Cam Belts
- ⚙ Brakes - Suspension
- ⚙ MOT testing station

Unit 12 - Malehurst Industrial Estate  
Minsterley - Shropshire - SY5 0EQ

[info@pontesburygarageservices.co.uk](mailto:info@pontesburygarageservices.co.uk)



**FAST - FRIENDLY - RELIABLE**

**Tel: 01743 296162**

Collared doves are a pale, pinky-brown grey colour, with a distinctive black neck collar (as the name suggests). They have deep red eyes and reddish feet. Their monotonous cooing will be a familiar sound to many of you. Although you'll often see them on their own or in pairs, flocks may form where there is a lot of food available.

What they eat:

Seeds, grains, buds and shoots.



# Cold Hill Shelters

**Mark Owen**

Design, build and installation

- Camping Pods
- Mobile Horse Shelters
- Stables
- All types of fencing, agricultural & domestic
- General Repairs to Outdoor Buildings
- Repairs to storm damaged buildings
- Garden Sheds & Garages

**07973 329944**

Email: [info@coldhillshelters.co.uk](mailto:info@coldhillshelters.co.uk)  
[www.coldhillshelters.co.uk](http://www.coldhillshelters.co.uk)



# Oil Prices Going Up?

Many members of our  
Community are saving  
money on their fuel bill by  
buying collectively.

Ring Derek on

**07958658260**

To find out more





## The Minsterley and District Eisteddfod Committee

would like to thank all the competitors who entered the various classes at the event on Saturday, 19 March 2022. We congratulate the winners and hope that both entrants and visitors enjoyed the occasion and gained pleasure from the performances. We extend our heartfelt thanks to the many friends who help out in various ways during the Festival weekend as it would be impossible to stage the event without this support.

The Committee is already beginning preparations for next year's celebratory event as 2023 marks the Eisteddfod's Diamond Anniversary !

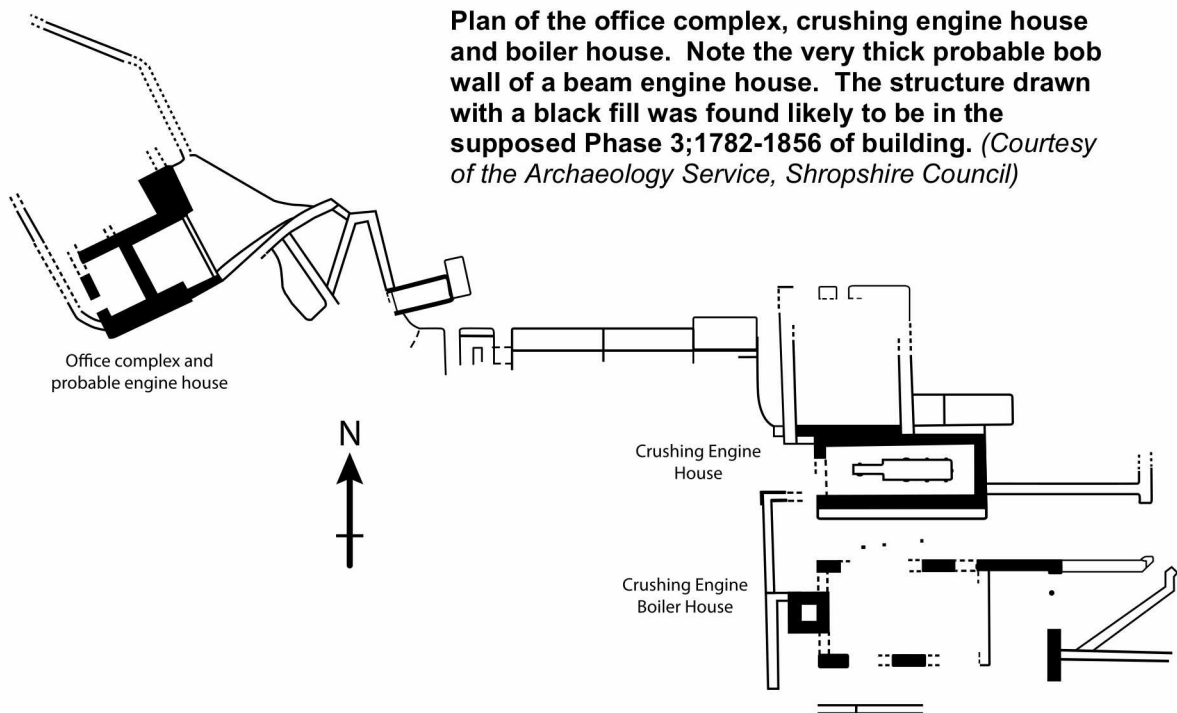
Claire Penrose (General Secretary)

### Saturday, 19 March 2022

#### RESULTS

Morning and Afternoon	Instrumental Solo - up to & including KS2	1st:	Martha Franks, Shrewsbury
		2nd:	Olive Coales, Shrewsbury
		3rd:	Annie Coales, Shrewsbury
	Recitation - KS1 & Reception	1st:	Aoife Clifford, Minsterley
	Vocal Solo Recitation - KS1 & Reception	1st:	Medi Rowles-Lloyd, Shrewsbury
		2nd:	Sian Rowles-Loyd, Shrewsbury
	Recitation - KS2 Years 5/6	1st:	Olive Coales, Shrewsbury
	Children's Choir - up to & including KS4	1st:	TACT Choir, Telford
	Original Children's Poem KS3 & 4	1st:	Iona Mandal, Birmingham
		2nd:	Ruby Allen, Acton Burnell
Evening	Instrumental Solo - KS3	1st:	Natalia Sheldon da Silva, Shrewsbury
		2nd:	Richard Pinsent, Shrewsbury
		3rd:	Poppy Besterman, Shrewsbury
	Solo from any Musical Show or Film - KS3 & 4	1st:	Olive Coales, Shrewsbury
		2nd:	Annie Coales, Shrewsbury
	Recitation - 18 years & under	1st:	Annie Coales, Shrewsbury
		2nd:	Ruby Allen, Acton Burnell
	Vocal Solo - 18 years & under	1st:	Ruby Allen, Acton Burnell
		2nd:	Ben Richards, Shrewsbury
	Open Individual Speaking	1st:	Ruby Allen, Acton Burnell
Special Awards		2nd:	Carol Burt, Church Stretton
	Original Short Story	1st:	Liz Cass, Worthen
		2nd:	Sarah Cowen-Strong, Worthen
	Original Poem	1st:	Diana Platts, Oswestry
		2nd:	Bryan Roberts, Shrewsbury
	Limerick	1st:	Diana Platts, Oswestry
		2nd:	Carol Minton, Minsterley
	Original Hymn Words	1st:	Sarah Cowen-Strong, Worthen
		2nd:	Michael Dennis, Snailbeach
	Original Hymn Tune	1st:	Diana Platts, Oswestry
	Open Instrumental Solo	1st:	Ben Richards, Shrewsbury
		2nd:	Richard Pinsent, Shrewsbury
	Solo from any Musical Show or Film - KS4 & Adults	1st:	Ruby Allen, Acton Burnell
		2nd:	Mara Musciano, Bedstone
	Open Vocal Solo	1st:	Ruby Allen, Acton Burnell
		2nd:	Mara Musciano, Bedstone
	Open Group Singing	1st:	The Richards Family, Shrewsbury
	Open Choirs Competition	1st:	Of One Accord, Shrewsbury
		2nd:	Rockspring Community Choir, Ludlow
	Outstanding Child Instrumentalist		Natalia Sheldon da Silva, Shrewsbury
	Instrumental Bursary (up to & including KS3)		Richard Pinsent, Shrewsbury
	Outstanding Child in Elocution events		Ruby Allen, Acton Burnell
	Outstanding Child Vocalist (KS1 & KS2)		N/A.
	Outstanding Child Vocalist (KS3 & KS4)		Ben Richards, Shrewsbury
	Child gaining the most place marks over all final classes		Olive Coales, Shrewsbury
	Child gaining the most place marks over all final classes who lives within a radius of fifteen miles of Minsterley		Olive Coales, Shrewsbury
	Best Original Composition in the Childrens classes		Iona Mandal, Birmingham
	'With the heart and understanding' award		Ruby Allen, Acton Burnell
	Best Original Composition in the Adults classes		Diana Platts, Oswestry

## The final 2 pages of Andy Cuckson's Article from last month



### 4 The mine in 1827

The next known description of the underground is by Absalom Francis, a mine manager employed in Flintshire by the Duke of Westminster. In 1827, during a downturn in the market, he produced a report for the company criticising various aspects of mine management and offering suggestions for more effective exploration and saving money. The 'bottom Day Level' was, according to Francis, the means of the Company discovering the four rich ore bunches which he said '*have been rich beyond most things that I have been acquainted with in Mining.*'

... The first is to the West of the Engine Shaft, length rather uncertain, the second opposite the Engine Shaft, about 10 fms long – the third bunch about 120 fms east of the Engine Shaft, 20 fms long, the two latter bunches are worked from 10 to 20 fms under the Level & said to be left poor, of which I have not the least doubt.

The whole or principal part of the present profits arise from the fourth bunch of Ore East, which is about 14 fathoms under the day Level; this bunch of Ore is about 25 fms long and I should have no hesitation in saying much better than any of the western bunches ...

(Note that Francis uses the abbreviation 'fms' for fathoms. 1 fathom = 6 feet = 2 yards)

Two of these ore bunches were being worked from between 20 and 40 yards 'under the Level,' so these bunches might have been worked at the time of Aikin's visit. Francis mentions the 'bottom Day Level' or just the 'Day Level' several times in his report. I assume he means the 112 Yard Level, which joins the Wagbeach adit and thereby reaches daylight.

Francis was told that the two latter bunches were 'left poor,' but that the fourth bunch, about 14 fathoms under the 112 Yard Level and east of the shaft was the major source of current profit. He said about working this bunch:

... The appearances of the present bottom are such as to warrant a fair profit for some considerable time to come, even at the present low price of lead ... A Shaft on this bunch of Ore would make it much more convenient; the Shaft to be always kept deepest through which all the Ore might be drawn and the little water also drawn to the Day Level ...



The partners appear to have ignored the economic benefits of direct haulage and drainage to be gained from the investment in sinking such a shaft. It took them another twenty years to sink a new and more convenient engine shaft as Francis suggested (see section 5).

Francis mentioned that the 'bottom Day Level' had been driven a little east past the fourth ore bunch and then discontinued. He recommended that the level should be driven '*with all possible speed*' since it was more likely than any other level to meet good ground. In contrast, Vincent's Level had been driven east about 100 fathoms. It was described as mostly very poor, yet was still being driven. It was on the 'Vein' (presumably the main vein), but apart from that the level cannot be identified. Francis recommended that this driving be stopped, and half or more of the cost saving be used for searching the vein at the surface. Foxhole Level had been driven about 70 fathoms and had crossed a promising vein. He recommended a trial driving east on this vein at half the current expense, and to set two men to search for it at the surface.

Francis' view of the development of Snailbeach was that far too much money was being spent on dead work (unprofitable trials/exploration such as driving levels and sinking pits), without properly considering the results of such trials. It is worth quoting several remarks he made on this subject in full:

... I think no Miner can judge in your Mining district under ground, how close they may be to a good bunch of Ore as the Change in the appearance of the country from Unproductive to productive ground is generally very sudden.

No Country can be better situated than yours for quick and cheap trials, as all the veins make such appearance at the surface as to be very easily traced with very little expence, and I think that any bunch of Ore which might be in the Veins would make such appearances at the surface as would [*enable*] an experienced Miner to determine on a spot for trial ...

Before I would recommend any Level to be driven there should be an object in doing it that to experienced Men could appear fully to justify the Expence and the time it may be in hand ...

... what [*has*] appeared right at the Commencement of these Levels, may from more experience and knowledge of the Country alter the appearance of the thing, and particularly so the very satisfactory trials that have been so far made from the time and Money spent in these Levels. It may appear strange that any one should give it as opinion that it is not a great Mining Country after what has been produced at Snailbeach, but taking this into the account and looking at the general appearance of the Country, I should not consider it a general good Mining one; and should recommend as the most certain way of seeing a return for a Capital laid out (in any reasonable time and the least expence) that so much of the Country as possible be skimmed over and tried on the surface ...

These comments by Francis set his opinion of the rich ore bunches in better context.

Francis reported critically on an adit then being driven from the Callow Hill mine to Snailbeach. If completed, this would have allowed water to drain to the brook at Little Minsterley via the Callow Hill mine, which already had its own adit. He wrote:

... the Water is so very trifling that 1/5<sup>th</sup> part of the Interest of the Money that it would cost to Drive the Level would keep out the water with a Steam Engine 50 fathoms under the present bottom, or I might say to the depth the level would come in, so that I see no reasonable object before you for driving it.

The height difference was only about 56 yards between the outfalls at Wagbeach and Little Minsterley. This would have drained barely two more levels below the Wagbeach adit at the usual vertical spacing of 30 yards, and it would have taken many years for the adit to reach Snailbeach. The idea was to reduce the cost of pumping by raising the water to the new, lower adit rather than to 112 yards. Clearly this work was an expensive mistake.





## **NEIL JONES** *Motor Services*

**Tyres, Exhausts,  
Bodywork  
Servicing and Pre  
MOTs etc.**

At Green Farm  
Stiperstones, SY5 0LZ  
Telephone 01743 791 783  
Mobile 07810 232 309

## **J. Lewis & Sons**

**Coal Merchants  
Haulage Contractors  
Hardcore, Sand & Gravels**

**Tel: 01743 791366**

jlewisandsons@outlook.com



A colourful mix of blue, yellow, white and green makes the blue tit one of our most attractive and most recognisable garden visitors. In winter, family flocks join up with other tits as they search for food. A garden with four or five blue tits at a feeder at any one time may be feeding 20 or more.

What they eat: Insects, caterpillars, seeds and nuts.



## *Tankerville Pottery and Gallery*

*we offer*

*an excellent collection of*

*Paintings, Crystals, Stoneware, Pottery'*

*Oven to Tableware, Bread Crocks*

*Super Presents at Reasonable Prices*



*Find us at Tankerville Hollow,  
Pennerley, SY5 0NB*

*Tel 01743 791 580*

*view our on-line gallery at  
[www.tankervillegallery.co.uk](http://www.tankervillegallery.co.uk)*

## **A M Batchelor Builders Ltd.**

Renovations, Extensions, Property Maintenance, Alterations and Hard Landscaping.  
Over 30 years of experience. Free estimates and advice.



**A M Batchelor Builders Ltd.**

**Coppice Farm**

**Snailbeach, Shrewsbury, Shropshire.**

**SY5 0NS**

**Mobile: 07785 531 910**

**Email: [andybatch36@hotmail.com](mailto:andybatch36@hotmail.com)**

## ***Our Upland Commons'***

is a three year national project led by the Foundation for Common Land. The many partners include Shropshire Wildlife Trust, Natural England, National Trust and Shropshire Hills AONB. The project aims to promote and enable collaborative management of common land, creating healthy commons and facilitating resilient commoning. But also (re) connecting the public with the natural and cultural heritage of common land and enhancing the environmental and ecological benefits offered by common land. The Shropshire Hills are one of four areas this is running (the others are Lake District, Yorkshire Dales and Dartmoor).

It is no coincidence that so much archaeology and so many historic features have been preserved on common land. Shared land management by commoners (called commoning) has protected landscapes for a thousand years to ensure the survival of ancient monuments and rare wildlife, plants, birds and butterflies. Today just 3% (400,000 hectares) of England remains as common land but some 11% of all scheduled monuments in England are found on commons. A large part of the Stiperstones NNR is common land as is the Long Mynd.

In the Shropshire Hills we have a number of Historic Environment related public events coming up:

On Tue 29th March at 7:30pm at Clee St Margaret Village Hall, a Roundup of all of the work that our volunteers did last autumn on Clee Liberty common (incl Nordy Bank Hillfort rampart repairs). Year two focus will be on the Medieval period, come and find out what is planned. To book please email [info@fearnheritage.co.uk](mailto:info@fearnheritage.co.uk)

Tues 26th April (morning) Document Research Workshop at Shropshire Archives. This will equip you to become a volunteer to help us further research the Pole Cottage site on the Long Mynd.

In May we will be holding a Lidar Interpretation Workshop using data we collected earlier this year to equip volunteers to make independent site visits to carry out 'ground truthing'.



The period from 16th to 31st July has been designated as the National Festival of Archaeology and during the first week we will hold a Community Excavation at the Pole Cottage site. You can help pinpoint the exact site of the old cottage, investigate other interesting features and try and establish if there was anything there before the cottage. More details will be shared as our plans are firmed up but mark it on your calendar now and register your

interest. On 27th July our Geophysics contractors will also carry out a survey of Novers Hill on the Long Mynd. Anyone is welcome to trek up there and watch them in action.





# JOHN W.F. BEBB

Building, Civil Engineering & Surfacing Contractor

The Bungalow,  
Weston Road,  
White Gritt,  
Minsterley,  
Shrewsbury, SY5 0JJ

Phone: 07815 801 871  
Fax: 01588 650 386  
Email:  
johnbebb@hotmail.co.uk

## LOGS FOR SALE

### Bulk Bag & Net Suppliers

Free delivery on bags  
within 10 miles.  
Nets for collection.



Danny Bebb  
Weston Road,  
White Gritt,  
Minsterley, Shrewsbury,  
SY5 0JJ

Phone: 07815 801 871  
Fax: 01588 650 386  
greenacreslogs@hotmail.com



## SKIPO BAG

### 07815 801 871

Order your bag (or multiple bags), fill them with  
your waste and leave them in a vehicle  
accessible place, call us and we will collect.

**CHEAPER & EASIER THAN A SKIP!**

£72 Inc VAT for bag & collection. Discounts on  
multiple bags from the same address at the  
same time



## JOHN W. F. BEBB

### SMALL TOOL & PLANT HIRE

07815 801 871

**Phone for details on all Tools & Plant.**  
**Delivery available.**

### Danny Bebb

The Bungalow,  
Weston Road,  
White Gritt,  
Minsterley,  
Shrewsbury, SY5 0JJ

Phone: 07815 801 871  
Fax: 01588 650 386  
Email:  
johnbebb@hotmail.co.uk

**Mini Digger £50**  
**High Lift Dumper £40**  
**Magic Screed £40**  
**Bull Float £30**  
**Wacker Plate £30**  
**Stihl Saw from £25**  
**Pointing Guns £10**  
**Grinders from £15**  
**Welder/Generator £50**  
**Trailer Hire from £15**  
**And much more!**



## ECO GARDEN VOLUNTEERS

If you'd like to learn more about organic gardening and enjoy learning through practical experience, Garden Designer and Natural Gardener Nancy Lowe is opening up her permaculture garden to volunteers this year, with monthly work parties running on the second Tuesday of every month. This will be a really fun way to pick up new skills, with work focusing on the edible and medicinal forest garden, on the no-dig vegetable patch and on gently tending the rewilded areas of the garden.



Nancy explains that “as a volunteer, you’ll be a massive help to me in putting into place all the exciting plans I have for these areas. It’s up to you whether you come along monthly or once every few months or whether you come for a whole morning or part of a morning each time, but the option is there to take part in the full yearly cycle of care and attention everything gets. As we work through the year, I want to make sure you get lots out of this experience. I’ll be passing on loads of skills and techniques that you can use in your own garden to help look after it in a natural, organic and sensitive way. This will also be a great way to meet like minded people and get a bit of exercise in the fresh air and in a really peaceful and restorative environment.”

No experience is necessary, just a willingness to get stuck in. Tea, cake, tools and training will be provided.

If you’re interested to find out more, get in touch via the Natural Gardener website: <https://www.thenaturalgardener.org.uk/contact>

### SNAILBEACH W.I.

Our March meeting welcomed Dorothy Nichols who gave a very interesting insight into how Ellis Peters ( namely Edith Pargeter) combined her fictitious character, Cadfael, with some true facts which made her excellent stories very plausible. Her books about Cadfael , together with the TV series, certainly put Shrewsbury on the tourist map. However, the TV series was not filmed in Shrewsbury but in Eastern Europe. Dorothy certainly showed her knowledge and interest in Cadfael and Ellis Peters.

**theWI**  
**INSPIRING WOMEN**

Bridgett has put together a programme for the start of our new year, and our April meeting will be for signing-on with a games evening to follow. If you wish to join our very friendly and social W.I., please come along to Snailbeach Village Hall on Thursday 14th April at 7.30pm, you will be most welcome.  
Joyce Graves.

Servicing & MOTs  
Diagnostics  
Repairs - Tyres  
Air Conditioning  
Pontesbury SY5 0RJ

# PLOUGH GARAGE

Established 1919



01743 790270

ploughgarage.co.uk



Mark Abrams

07515 441954

[mwagardencare.blogspot.com](http://mwagardencare.blogspot.com)  
[mwa.gardens@gmail.com](mailto:mwa.gardens@gmail.com)

Lydcote, The Lyde  
Bromlow SY5 0EB



MWA Garden Care

Grounds and Garden Maintenance

The chaffinch is one of the most widespread and abundant bird in Britain and Ireland. Its patterned plumage helps it to blend in when feeding on the ground and it becomes most obvious when it flies, revealing a flash of white on the wings and white outer tail feathers. It does not feed openly on bird feeders - it prefers to hop about under the bird table or under the hedge. You'll usually hear chaffinches before you see them, with their loud song and varied calls.

What they eat: Insects and seeds.



Double Vision  
Mobile Bars

& BAKES

Double your fun!

Double Vision cater for all occasions,  
from weddings, anniversaries and village fetes,  
to business parties and corporate events.

Mobile Bars ~ Hog Roasts ~ Candy Carts ~ Cakes & Bakes



Jess Harding • 07828 785219

[info@doublevision-mobilebars.co.uk](mailto:info@doublevision-mobilebars.co.uk) [www.doublevision-mobilebars.co.uk](http://www.doublevision-mobilebars.co.uk)

[facebook.com/DoubleVisionMobileBars](https://facebook.com/DoubleVisionMobileBars)

## STRENGTH & STABILITY CLASS FOR AGES 60+

Tuesdays 9.30am—10.30am  
at Minsterley Parish Hall

Thursdays 10.00am—11.00am  
at The Pavilion Community Hub,  
Pontesbury

**Booking is essential.**

Contact Dan Lewis on  
**07904 338 791**

or



[danlewisfitness@btinternet.com](mailto:danlewisfitness@btinternet.com)

8						1		
		9	2		6		4	
	4	3		1		2	8	
		7						4
	9		4		2		6	
4						5		
	6	5		7		9	2	
	8		9		5	4		
		4						8

So I've been a little bored and my wife suggested I make a bird table.

Well...she's not happy. I've just finished adding up all the scores and she's only in fifth place.

							4	
		3		7		1	8	
1	7			8				9
					2			8
	9	1				4	2	
8			5					
7				9			6	3
	1	6		4		7		
	5							

These are extracts from actual letters sent to various councils and housing associations throughout the UK.

Thanks to Malcom Dunbar

1) I want some repairs done to my cooker as it has backfired and burnt my knob off.

2) I wish to complain that my father hurt his ankle very badly when he put his foot in the hole in his back passage.

3) And their 18 year old son is continually banging his balls against my fence.

4) I wish to report that tiles are missing from the outside toilet roof. I think it was bad wind the other night that blew them off.

5) My lavatory seat is cracked. Where do I stand.

6) I am writing on behalf of my sink that is coming away from the wall.

7) Will you please send someone to mend the garden path. My wife tripped and fell on it yesterday and now she is pregnant. We are getting married in September and we would like it in the garden before we move into the house.

8) I request permission to remove my drawers in the kitchen.

9) Can you please tell me when the repairs will be done as my wife is about to become an expectant mother. 50% of the walls are damp, 50% have crumbling plaster and the rest are plain filthy.

10) I am still having problems with smoke in my new drawers.

11) The toilet is blocked and we cannot bath the children until it is cleared.

12) Will you please send a man to look at my water. It is funny colour and not fit to drink.



# Better Broadband for your community

Ultrafast Broadband where  
other providers cannot reach

We are bringing  
ultrafast broadband to your area

Unlimited broadband from **30mbps** to a whopping **900mbps**

Register your interest now on **03337 000 227**  
or visit our website at: [www.securewebservices.co.uk](http://www.securewebservices.co.uk)



**SWS BROADBAND**

an **(R)(B)(B)(S)** company



**03337 000 227**  
**The Yard at**  
**Green Farm**  
**Stiperstones**  
**Shrewsbury**  
**SY5 0LZ**





## Heather Kidd

Local Shropshire Councillor  
for

**Chirbury & Worthen**  
including Snailbeach and  
Stiperstones

Telephone: 01938 561 651

Mobile: 07980 635 518

Email:

heather.kidd@shropshire.gov.uk

Facebook: Heather Kidd

www.heatherkidd.org.uk

**Chirbury Affordable Homes.** This has been given draft approval but is awaiting the pre-commencement conditions. No building can start until those are signed off. Hard work is now going on to make sure this can happen as soon as possible and builders can be appointed. It is hoped that it will all begin by October. The barns may well come down at some point before that and the hedge around the new road could be taken out very soon to avoid disturbing nesting birds. Grant funding is in place  
View online at: <http://pa.shropshire.gov.uk/onli.../applicationDetails.do...>

People interested should make sure they have applied to Homepoint to be eligible.

<https://www.shropshirehomepoint.co.uk/.../ASPPages/1/30.aspx>

These are for people with local connections to Chirbury and Brompton Parish

**Help for the Ukraine.** If you want to donate to help the Ukraine, one good way is to donate to the Disasters Emergency Committee (DEC) which is a consortium of 15 prominent charities in the UK including the Red Cross, Salvation Army, Oxfam and Save the Children. Go to [www.dec.org.uk](http://www.dec.org.uk) Also Shropshire Supports Refugees gives a range of advice: <https://www.shropshiresupportsrefugees.org/>

Best wishes Heather

## Heather's Report for March 2022

**Claim Pension Tax Credit.** In these tough times I am concerned that some people are not claiming benefits that they are entitled to. There are 1.8 million eligible people across the UK not claiming this Pension Credit. Not only could it provide some extra household income to address rising food and fuel costs but it may also mean entitlement to other benefits such as a free TV licence or help with rent and council tax. You can also seek help and support from Age UK in Shrewsbury. Phone : 01743 233123 Email: [enquiries@ageukstw.org.uk](mailto:enquiries@ageukstw.org.uk) or ring me.

**Hope School Site Housing.** Both the Councils housing company – Cornovii and the STAR Housing have now said that they cannot afford to develop the site because of the difficult drainage issues on the site. I will be speaking to the Property Services Department of Shropshire Council as a matter of urgency about the future of the School building and the site.

### Key Phone Numbers

NHS Help

111

Worthen Medical

01743 891 401

Pontesbury Medical

01743 790 325

Shropshire Council

0345 678 900

Care in the Community

0121 318 5138

Citizen's Advice

0344 499 1100

Rural Support

0300 123 2825

Age Concern 01743 233 123

Samaritans (Free)

116 123

Western Power

(Power Cut) 105

Severn Trent (emergency)

0800 783 4444

British Gas

0800 111 999

Universal Credit

0800 328 5644

Child Benefit

0300 200 3100

Pensions

0800 731 0469

HMRC Covid 19 support

0800 024 1222

Care in the Community 0121 318 5138

Stiperstones Inn

01743 791327

John's Shop 01743 790594

# Event Equipment Hire Service

## Village Outreach Planning an event post-covid?



**NEED TO HIRE A MARQUEE,  
GAZEBOS?**

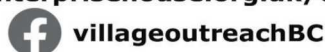
**TABLES, CHAIRS, STAGING,  
PA SYSTEMS, LIGHTS**

**we can help**

**CALL 01588 630097**

[villageoutreach@bishopscastle.co.uk](mailto:villageoutreach@bishopscastle.co.uk)

[www.enterprisehouse.org.uk/outreach](http://www.enterprisehouse.org.uk/outreach)



## Ruby Vehicle Services Ltd



### Pennerley, Shropshire

**Flexible, reliable services to keep you motoring**

- HGV and light commercial repair and maintenance
- Service and inspection
- Major repairs and restoration projects
- Roadside assistance and recovery
- On-site service available
- Vehicle transportation
- Technician hire
- MOT preparation and presentation

[info@rubyvehicleservicesltd.com](mailto:info@rubyvehicleservicesltd.com)

[www.rubyvehicleservicesltd.com](http://www.rubyvehicleservicesltd.com)



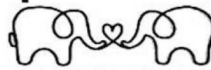
**07960 960730**

**07940 577685**

**01743 792292**



## Enterprise House



**DON'T FORGET!**

and More!  
Business Cards  
Invites Cards  
Flyers Booklets  
Posters Leaflets  
**We Print & Design**  
Invites Cards  
Business Cards  
Flyers Booklets  
Posters Leaflets

Contact us now for a quote

Printing to Maximum A3 size

Station Street, Bishop's Castle. SY9 5AQ

Tel: 01588 638038

email: [info@enterprisehouse.org.uk](mailto:info@enterprisehouse.org.uk)

[www.enterprisehouse.org.uk](http://www.enterprisehouse.org.uk)

Rodney Frederick Burt  
Small Electrical work, Maintenance and lighting

## Sparkyrod

[rodneyburt20@gmail.com](mailto:rodneyburt20@gmail.com)  
07397516631

46 Snailbeach Shrewsbury  
Shropshire SY5 0LT

Temporary Post Office  
Stiperstones Inn  
12.15 to 2.15  
Tuesdays only





# HIGNETTS of Pontesbury Ltd

est. 1919

Family run fresh food retailers

Locally sourced meat  
Fresh fruit and vegetables  
Fair trade foods  
Bread, pies, buns and cakes  
all baked on the premises daily.

Freshly filled sandwiches  
baguettes and rolls

Groceries at competitive prices  
Garden plants and flowers  
Compost and grow bags

UPS parcel collection  
and delivery hub

**Tel: 01743 790228**

***www.hignetts.co.uk***



## The Stiperstones Inn

### Upcoming Events

2022

**Knitter Natter**  
10am Every Tuesday!

---

**Big Money Bingo**  
8.00pm Monday 11th April

**Board Games Night**  
7.30pm Monday 18th April

**Pub Quiz**  
8.00pm Monday 25th April

---

**Big Money Bingo**  
8.00pm Monday 9th May

**Board Games Night**  
7.30pm Monday 23rd May

**Pub Quiz**  
8.00pm Monday 30th May

Pontesbury  
& Rea Valley  
**u3a**

Come and join us for our next Open Meeting on  
**Wednesday 20 April 2022 2.00pm**  
at Minsterley Parish Hall

#### **"Show & Tell"**

A face-to-face version of our successful Zoom event last year.

Can you identify the mystery objects?

Have you got any items at home whose use is not immediately obvious?

Have you got any items at home that are special, unusual or have a bit of history attached?

Join us for an afternoon of interest and fun – maybe bring an item along for people to guess or learn about.

Meet up with friends, old and new – and find out about the u3a if you're not already a member

To find out more contact Susan Lockwood:

susanlockwood345@btinternet.com

Phone: 01743 791082

Mobile: 07854 110271



## The Flower Shop

3 Station Road,  
Minsterley

**Tel 01743 791860**

Fresh Flowers

Plants, Greetings Cards  
Wrapping Paper, Helium Balloons  
and Much More

Email [theflowershop@aol.com](mailto:theflowershop@aol.com)



Dave Ashworth

**Heating Engineer**

Service - Breakdown

Mobile : 07920 194107 | Home : 01743 791202

## John Powell's Home Improvements

**For any Plastering, Tiling, Plumbing  
and General Maintenance.**

Can also fit kitchens and bathrooms.

Fully Insured.

**NO JOB TOO BIG OR TOO  
SMALL**

Call John on

**Home : 01743 791627**

**Mobile : 07838015005**



**Don't Ditch it  
Mick'll Fix it !**

Retired electronics engineer who  
likes to fix things

Over 30 years experience  
but now it's a hobby

- **TV's**
- **Stereos**
- **Electricals**
- **Microwaves**
- **CB Radios**
- **Videos**
- **Kettles**
- **Lamps**
- **Radios**
- **2 Way Radios**

Not "white goods" (washing machines etc)  
but will always look at anything else.

All repairs PAT tested

**Tel: 07516 333141**

**Email: [Michaelwanless5@gmail.com](mailto:Michaelwanless5@gmail.com)**

## Computer Problems?



Hardware & Software support  
Troubleshooting, repairs & upgrades  
Custom set up of : laptops, PC's & Tablets  
WIFI and cabled network configuration  
Broadband and internet issues  
Malware and Virus removal  
Security software setup  
File rescue / data recovery  
Printer issues  
Backup solutions  
Mobile service to your door  
Remote support



Friendly local IT support for home and  
small businesses: South Shropshire area  
We can resolve most issues quickly  
and conveniently at your location.

Setting up a PC out of the box can be challenging, it  
often ends up in confusion resulting in a machine that  
is a pain to use. The manufacturers don't make it any  
easier, bombarding the user with multiple choices and  
unnecessary software.

By enabling easy access to the things that you like and  
frequently use and by placing the things that you don't  
need or use out of the way, we can provide you with a  
system that is secure, simple to operate and  
customised to your specific needs.

**Contact: Rob**  
**Tel: 01588-650567**  
**Mobile: 07765-240718**  
**Email: [robwestonnet@aol.com](mailto:robwestonnet@aol.com)**





## British Birds

B A Q D R L B S E L A G N I T H G I N V N R W B  
 T P Y U X F M U T W M E L A P W I N G W E B A U  
 H N L S A A E H Z B G L A B R Z Y L P H E T G Z  
 R T V E L A E J D N J R L G R F C N C V N G T Z  
 U S X L K A Z T S A B I H M L V V T Z A P C A A  
 S U A W T J M E E W L I A U Q E A Q S Q H F I R  
 H R X B Y A J N S S A K V T D C H A O A J E L D  
 D C C R O W D N O O M N A K R N E G F E G C W W  
 B N B C K C A A O Q F S R E C H W F P P C M G A  
 B C E S U O R G G F S Q T J P O I E F M V N S D  
 D J G R I G G R E B E S X Z R N R L L E R A P K  
 V S E B W E R Y G Q Y L A I C Y A N Y R N E A C  
 V P T Z P F I E M O O H A H R H O V C D U J U A  
 G A Y A D C O P I H R S L E N C Q P P R X C B J  
 D R Y J R Z G H G R E A P A L Z J I L H A P P Y  
 L R L Z L L T N P A R H N R D G P S N E M K Q F  
 P O S O U O I O I N M A J M E E J V O Z I N E E  
 G W K C Z H R N Q T V T H R R Y P Y R F V Q I Q  
 U F O T Z F Q H G I N Z T S R F Z K E M F D G V  
 O O L Z L E R T S E K U P M H T Q N H R E L Z E  
 T D F U W S O Y H G B W B Q W W B X L R O O H H  
 T Q F C W I G E O N L C O R M O R A N T G B P P  
 M L P D P M O O R H E N T P E R E G R I N E I P  
 V C R P A R T R I D G E S P A R R O W H A W K N

BUNTING	BUZZARD	CHAFFINCH	COOT	CORMORANT
CORNCRAKE	CROW	CURLEW	EAGLE	EIDER
GANNET	GOOSE	GREBE	GROUSE	HARRIER
HERON	JACKDAW	JAY	KESTREL	LAPWING
MAGPIE	MALLARD	MOORHEN	NIGHTINGALE	OSPREY
OYSTERCATCHER	PARTRIDGE	PEREGRINE	PHEASANT	QUAIL
ROBIN	SANDPIPER	SPARROW	SPARROWHAWK	STARLING
SWAN	THRUSH	WAGTAIL	WIGEON	WREN



Investment Planning  
Retirement Planning  
Inheritance Tax  
Planning  
Intergenerational  
Planning  
Mortgages

It's important you make  
the right decisions.

With over 30 years experience, we offer friendly professional advice on a wide range of financial services.



Lewis Wealth Management Limited.  
St. James's House, Anchorage Avenue,  
Shrewsbury SY2 6FG  
Office: 01743 444 700  
Mobile: 07967 430 392  
Email: Neil.Lewis@sjpp.co.uk  
Web: lewiswealthmanagement.co.uk

Your home may be repossessed if you do not keep up repayments on your mortgage.

The largest UK tit - green and yellow with a striking glossy black head with white cheeks and a distinctive two-syllable song. It is a woodland bird which has readily adapted to man-made habitats to become a familiar garden visitor. It can be quite aggressive at a birdtable, fighting off smaller tits. In winter it joins with blue tits and others to form roaming flocks which scour gardens and countryside for food.  
What they eat: Insects, seeds and nuts.



**A FRIENDLY  
SERVICE**  
FROM  
**JENNY, STACEY  
& MICHELLE**

*Who welcome  
customers  
old and new*



# HAIR BY JEN

3 STATION ROAD

MINSTERLEY

**TUESDAY 9 TO 3**

**WEDNESDAY 9 TO 7**

**THURSDAY 9 TO 9**

**FRIDAY 9 TO 5**

**SATURDAY BY ARRANGEMENT**

**BARBER SERVICE 07557 144139**

TELEPHONE

**01743 792548**

FOR AN APPOINTMENT

## West Mercia Police

### BISHOP'S CASTLE & RURAL Safer Neighbourhood Team

**BISHOPS CASTLE & RURAL SNT** are based at Bishops Castle Police Station, Union St, Bishops Castle, SY9 5AJ.

We work in the Parishes and area's of Bishops Castle, Mainstone, Colebatch, Clun, Llanfair Waterdine, Newcastle on Clun, Bettws-Y-Crwyn, Stowe, Bucknell, Bedstone, Hopton Castle, Clungunford, Aston on Clun, Hopesay, Clunbury, Edgton, Wistanstow, Lydbury North, Lydham, More, Norbury, Wentnor, Ratlinghope, Stiperstones, Worthen and Chirbury.

#### Team details

Safer Neighbourhood Sergeant: Sgt 2382

Damien Kelly

Safer Neighbourhood Officer: PC 3331

Stuart Coote

Police Comm. Support Officer: PCSO

6160 Shaun Culliss

Police Comm. Support Officer: PCSO

40492 Nicole Jones

Team Email:

bccar.snt@westmercia.pnn.police.uk

#### West Mercia Police contact numbers

Emergency: 999 Non Emergency: 101

Bishops Castle Police Station (not for

reporting): 101, Extension 7704901

Report online: [www.westmercia.police.uk/ro/report/](http://www.westmercia.police.uk/ro/report/)

Crime stoppers: 0800 555 111

Website: [www.westmercia.police.uk](http://www.westmercia.police.uk)

Twitter: @SouthShropCops

Facebook: Bishop's Castle Policing Team

Rural Watch

### CRIME/INCIDENTS TO NOTE REPORTED CHIRBURY, WORTHEN, HOPE, SHELVE & STIPERSTONE

15<sup>th</sup> February 2022 - 15<sup>th</sup> March 2022

CRIME REPORTED	DETAILS	LOCATION	NOTES
Harassment		Worthen	Suspect arrested
Assault		Worthen	Linked to above
Interference with a motor vehicle	Offenders disturbed attempting to take a catalytic converter from Honda Jazz. Offenders made off in a van type vehicle in the direction of Marton.	Stockton	Occurred 22:50, 7 <sup>th</sup> March. Of note - a further two Honda Jazz's have been targeted for catalytic converters in Church Stretton over the last two weeks.
Harassment		Chirbury	
Harassment		Brockton	

ts twittering, wheezing song and flash of yellow and green as it flies, make the greenfinch a truly colourful character. Nesting in a garden conifer, or feasting on black sunflower seeds, the greenfinch is a regular garden visitor, able to take advantage of food in rural and urban gardens. Although quite sociable, they may squabble among themselves or with other birds at the bird table.

Greenfinch populations declined during the late 1970s and early 1980s but increased dramatically during the 1990s. A recent decline in numbers has been linked to an outbreak of trichomonosis, a parasite-induced disease that prevents the birds from feeding properly. To help stop the spread, make sure to keep your bird feeders clean. What they eat: Seeds and insects.



# 552/553 Bishops Castle Stiperstones Shrewsbury

## Monday - Friday

Notes (SCH - School Days Only)			SCH		SCH													
Bishops Castle, opp Boars Head				07:30				09:40				12:20		13:30			15:40	
Bishops Castle Salop Street Jct				07:32				09:42				12:22		13:32			15:42	
Lydham Glebe Meadow Jct				07:36				09:46				12:26		13:36			15:46	
Llan Turn Jct				07:40				09:50				12:30		13:40			15:50	
White Grit, Jct				07:44				09:54				12:34		13:44			15:54	
Gravels				07:47				09:57				12:37		13:47			15:57	
Hope				07:50				10:00				12:40		13:50			16:00	
Stiperstones, opp Pub	06:50	07:20	07:50		08:23				11:15					14:35			16:50	
Snailbeach, Village Hall	06:54	07:24	07:54		08:27				11:19					14:39			16:54	
Plox Green, Crossroads	06:56	07:26	07:56	07:56	08:30			10:06	11:21	11:55	12:46	13:05	13:56	14:41		16:06	16:53	
Minsterley, opp crown & sceptre	06:58	07:28	07:58	07:58	08:33	08:50	09:25	10:08	11:23	11:57	12:48	13:07	13:58	14:43	15:10	16:08	16:58	17:35
Pontesbury, Hall Bank	07:03	07:33	08:03	08:03	08:37	08:55	09:30	10:13	11:28	12:02	12:53	13:12	14:03	14:48	15:15	16:13	17:03	17:40
Mary Webb					08:40										15:26 SCH			
Lea Cross, Opp Jct	07:08	07:38	08:08	08:08		09:00	09:35	10:18	11:33	12:07	12:58	13:17	14:08	14:53	15:30	16:18	17:08	17:45
Hanwood, Cock Inn	07:11	07:41	08:11	08:11		09:03	09:38	10:21	11:36	12:10	13:01	13:20	14:11	14:56	15:33	16:21	17:11	17:48
Hanwood, Caradoc View Jct	07:13	07:43	08:13	08:13		09:05	09:40	10:23	11:38	12:12	13:03	13:22	14:13	14:58	15:35	16:23	17:13	17:50
Radbrook Oakfield Rd Jct	07:18		08:18							12:17					15:40			
Shrewsbury Hospital		07:48		08:18		09:10	09:45	10:28	11:43		13:08	13:27	14:18	15:03		16:28	17:18	17:55
Copthorne Rd, adj Barracks	07:23	07:53	08:23	08:23		09:15	09:50	10:33	11:48	12:22	13:13	13:32	14:23	15:08	15:45	16:33	17:23	18:00
Bus Station Stand N	07:30	08:00	08:30	08:30		09:22	09:57	10:40	11:55	12:29	13:20	13:39	14:30	15:15	15:52	16:40	17:30	18:07

Notes (SCH - School Days Only)												SCH			SCH			
BUS STATION, Stand N	07:35	08:10	08:50	10:05	10:25	11:00	12:00	12:30	13:30	14:00	14:35		15:45	16:25	16:25	17:00	17:40	18:10
Copthorne Rd, opp Barracks	07:42	08:17	08:57	10:12	10:32	11:07	12:07	12:37	13:37	14:07	14:42		15:52	16:32	16:32	17:07	17:47	18:17
Shrewsbury Hospital			09:02	10:17	10:37		12:12	12:42	13:42	14:12			15:57	16:37		17:12	17:52	
Radbrook Oakfield Rd Jct	07:47	08:22				11:12					14:47				16:37			18:22
Hanwood, Caradoc View Jct	07:52	08:27	09:07	10:22	10:42	11:17	12:17	12:47	13:47	14:17	14:52		16:02	16:42	16:42	17:17	17:57	18:27
Hanwood, Cock Inn	07:54	08:29	09:09	10:24	10:44	11:19	12:19	12:49	13:49	14:19	14:54		16:04	16:44	16:44	17:19	17:59	18:29
Lea Cross, adj Jct	07:57	08:32	09:12	10:27	10:47	11:22	12:22	12:52	13:52	14:22	14:57		16:07	16:47	16:47	17:22	18:02	18:32
Mary Webb		08:36 SCH										15:20						
Pontesbury, opp Shop	08:03	08:38	09:18	10:33	10:53	11:28	12:28	12:58	13:58	14:28	15:03	15:21	16:13	16:53	16:53	17:28	18:08	18:38
Minsterley, adj crown & sceptre	08:07	08:42	09:22	10:37	10:57	11:32	12:32	13:02	14:02	14:32	15:07	15:27	16:17	16:57	16:57	17:32	18:12	18:42
Plox Green, Crossroads	08:09			10:39	10:59	11:34	12:34	13:04	14:04	14:34		15:29	16:19	16:59	16:59		18:14	18:44
Snailbeach, Village Hall					11:01				14:06			15:32	16:21		17:01			18:46
Stiperstones, adj Pub					11:05				14:10			15:35	16:25		17:05			18:50
Hope	08:15			10:45			12:40			14:40				17:05			18:20	
Gravels	08:19			10:49			12:44			14:44				17:09			18:24	
White Grit, Jct	08:23			10:53			12:48			14:48				17:13			18:28	
Llan Turn Jct	08:27			10:57			12:52			14:52				17:17			18:32	
Lydham Glebe Meadow Jct	08:31			11:01			12:56			14:56				17:21			18:36	
Bishops Castle Salop Street jct	08:33			11:03			12:58			14:58				17:23			18:38	
Bishops Castle, adj Boars Head	08:35			11:05			13:00			15:00				17:25			18:40	

From 6<sup>th</sup> January 2020



## 552/553 Saturday

	07:30		09:30		12:15			15:50	
	07:32		09:32		12:17			15:52	
	07:36		09:36		12:21			15:56	
	07:40		09:40		12:25			16:00	
	07:44		09:44		12:29			16:04	
	07:47		09:47		12:32			16:07	
	07:50		09:50		12:35			16:10	
07:05		09:20						14:45	
07:09		09:24						14:49	
07:11	07:56	09:26	09:56	11:40	12:41	14:00	14:51	16:16	16:55
07:13	07:58	09:28	09:58	11:42	12:43	14:02	14:53	16:18	16:57
07:18	08:03	09:33	10:03	11:47	12:48	14:07	14:58	16:23	17:02
07:23	08:08	09:38	10:08	11:52	12:53	14:12	15:03	16:28	17:07
07:26	08:11	09:41	10:11	11:55	12:56	14:15	15:06	16:31	17:10
07:28	08:13	09:43	10:13	11:57	12:58	14:17	15:08	16:33	17:12
07:33	08:18	09:48	10:18	12:02	13:03	14:22	15:13	16:38	17:17
07:38	08:23	09:53	10:23	12:07	13:08	14:27	15:18	16:43	17:22
07:45	08:30	10:00	10:30	12:14	13:15	14:34	15:25	16:50	17:29

08:00	08:35	10:05	10:45	12:30	13:45	14:45	15:40	17:00	17:40
08:07	08:42	10:12	10:52	12:37	13:52	14:52	15:47	17:07	17:47
08:12	08:47	10:17	10:57	12:42	13:57	14:57	15:52	17:12	17:52
08:17	08:52	10:22	11:02	12:47	14:02	15:02	15:57	17:17	17:57
08:19	08:54	10:24	11:04	12:49	14:04	15:04	15:59	17:19	17:59
08:22	08:57	10:27	11:07	12:52	14:07	15:07	16:02	17:22	18:02
08:28	09:03	10:33	11:13	12:58	14:13	15:13	16:08	17:28	18:08
08:32	09:07	10:37	11:17	13:02	14:17	15:17	16:12	17:32	18:12
08:34	09:09	10:39	11:21	13:04	14:19	15:19	16:16	17:38	18:14
	09:12				14:21			17:40	
	09:15				14:25			17:45	
08:40		10:45				15:25		18:20	
08:44		10:49				15:29		18:24	
08:48		10:53				15:33		18:28	
08:52		10:57				15:37		18:32	
08:56		11:01				15:41		18:36	
08:58		11:03				15:43		18:38	
09:00		11:05				15:45		18:40	

**Minsterley Motors**  
Telephone 01743 791208

745 Mondays and Fridays only	
Pontesbury to Clun 745 A	
Pontesbury Shop	08:50
Minsterley	08:55
Hope	09:00
Gravels	09:03
White Grit	09:05
Lyddham	09:10
Bishops Castle	09:15
Colebatch	09:20
Clun	09:30
Ludlow to Clun 745 B	
Ludlow Assembly Rooms	13:15
Craven Arms	13:30
Long Meadowend	13:35
Aston on Clun	13:37
Lydbury North	13:50
Little Brampton	14:00
Clunton	14:02
Clun	14:05
Clun to Ludlow 745 B	
Clun	09:35
Clunton	09:38
Little Brampton	09:40
Lydbury North	09:50
Aston on Clun	10:03
Long Meadowend	10:05
Craven Arms	10:10
Ludlow Assembly Rooms	10:25
Clun to Pontesbury 745 A	
Clun	14:10
Colebatch	14:20
Bishops Castle	14:25
Lyddham	14:30
White Grit	14:35
Gravels	14:37
Hope	14:40
Minsterley	14:45
Pontesbury	14:50

Does not run on Bank Holiday except Good Friday

**Minsterley Motors**



775 Tuesdays only	
Pontesbury to Bishops Castle 775 A	
Pontesbury Shop	09:30
Minsterley	09:35
Plox Green	09:38
Hope	09:40
Gravels	09:45
White Grit	09:48
Llan Turn	09:51
Bromleys Mill	09:55
Lyddham	09:57
Bishops Castle	10:00
Bishops Castle to Newtown 775 B	
Bishops Castle	10:05
Church Stoke	10:20
Blue Bell	10:25
Sarn	10:30
Kerry	10:40
Newtown	10:50
Newtown to Bishops Castle 775 B	
Newtown	13:50
Kerry	14:00
Sarn	14:10
Blue Bell	14:15
Church Stoke	14:20
Bishops Castle	14:35
Bishops Castle to Pontesbury 775 A	
Bishops Castle	14:40
Lyddham	14:43
Bromleys Mill	14:45
Llan Turn	14:49
White Grit	14:52
Gravels	14:55
Hope	15:00
Plox Green	15:02
Minsterley	15:05
Pontesbury	15:10

**Minsterley Motors**  
Telephone 01743 791208

# CAR BOOT and TABLE TOP SALE



**MONDAY 2<sup>nd</sup> MAY**

9.30am till 12 noon  
(SELLERS ADMITTED FROM 8.30AM)

**MINSTERLEY PARISH HALL  
SY5 0HR**

OUTDOOR PITCH or TABLE INDOORS £8.00  
TO BOOK A TABLE OR PITCH PHONE Marie Edwards on 01743 791508

FOOD and HOT DRINKS AVAILABLE FROM 8.30am

PROCEEDS ARE FOR THE WORK OF HOLY TRINITY CHURCH MINSTERLEY

Come and celebrate the Queen's Platinum Jubilee at  
**HOLY TRINITY CHURCH HOPE**



# FETE



CREAM TEAS, PIMMS TENT  
DUCK RACE

**STIPERSTONES BRASS**



**SATURDAY 4<sup>th</sup> JUNE**

2.00 - 4.00pm

in the grounds of  
**LEIGH MANOR**

MINSTERLEY SY5 OEX

By kind permission of David and Annabel Stacey

Any offers of help and/or donations will be most welcome! Please contact  
Joyce Graves on 01743 891901

# COFFEE MORNING SATURDAY 23<sup>rd</sup> APRIL



From 10.00am till 12 noon at  
**The Cobbles, Minsterley SY5 0BA**  
by kind permission of David & Margaret Wainwright

CAKES - RAFFLE - BRING & BUY - PLANTS  
**ALL ARE MOST WELCOME!**

Please contact Margaret on 01743 792787 if you can donate cakes or  
help in any other way.

Proceeds are for the work of Holy Trinity Church Minsterley

# WILDLIFE GARDENING

**2022**

**2nd April**

Pontesbury  
Climate  
Emergency  
Action Group



**GROW FOR NATURE**

Learn to grow a garden that thrives.



Talk and question time  
2pm Pontesbury Pavilion  
With Natural Gardener, Nancy Lowe  
Entry: £2.50



Thanks to all our contributors and advertisers for giving me so much copy to  
squeeze in, and to the RSPB for images and information from their excellent web  
site [www.rspb.org.uk](http://www.rspb.org.uk).  
Any advertising revenue still outstanding must be paid this month at the latest -  
our treasurer is looking anxious.